

Aluminium Composite Panel



NEOBOND[®]

WILLIAMS COMPOSITE MATERIALS

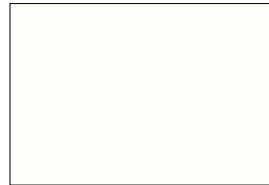
SOLID&METALLIC



WI-702 Porcelain white



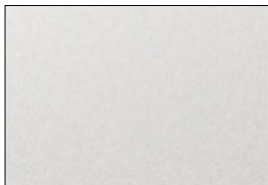
WI-701 Crown white



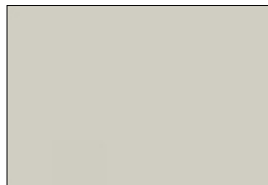
RAL 9010 Pure white



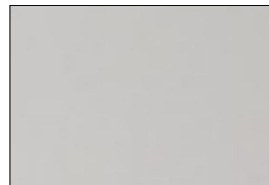
WI-703 Ivory



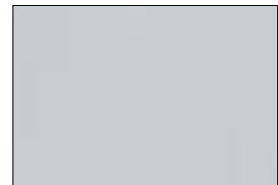
WI-731 Bright silver metallic



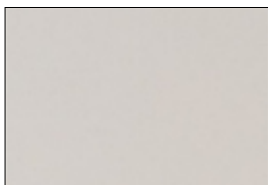
WI-733 Beige



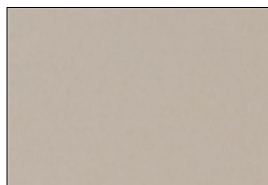
WI-708 Silver metallic



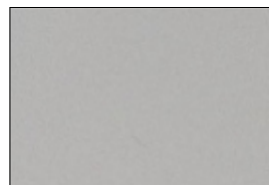
WI-706 Light grey



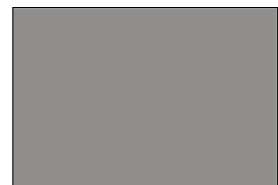
WI-711 Champagne metallic



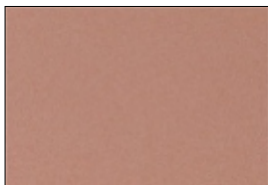
WI-735 Bronze metallic



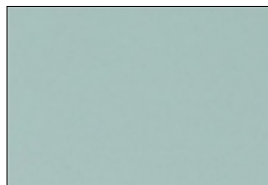
WI-734 Smoke silver metallic



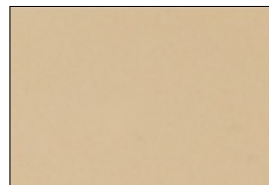
RAL 7005 Mouse Grey



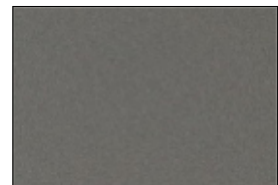
WI-700 Copper metallic



WI-714 Sea green metallic



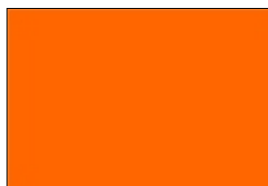
WI-736 Sand golden



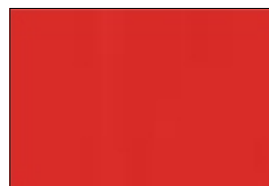
WI-737 Dark grey metallic



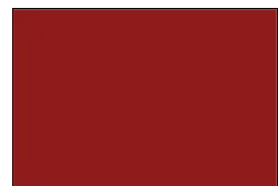
WI-719 Yellow



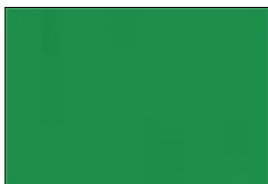
RAL 2009 Traffic orange



WI-728 Red



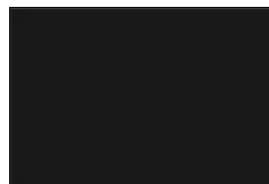
RAL 3003 Ruby red



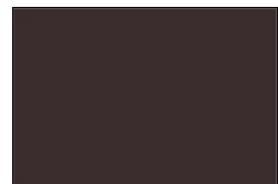
WI-722 Green



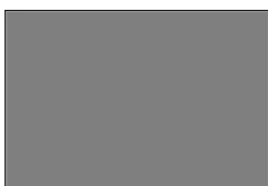
WI-727 Blue



RAL 7021 Black grey



RAL 8019 Grey brown



RAL 7012 Basalt grey



RAL 7016 Anthracite grey



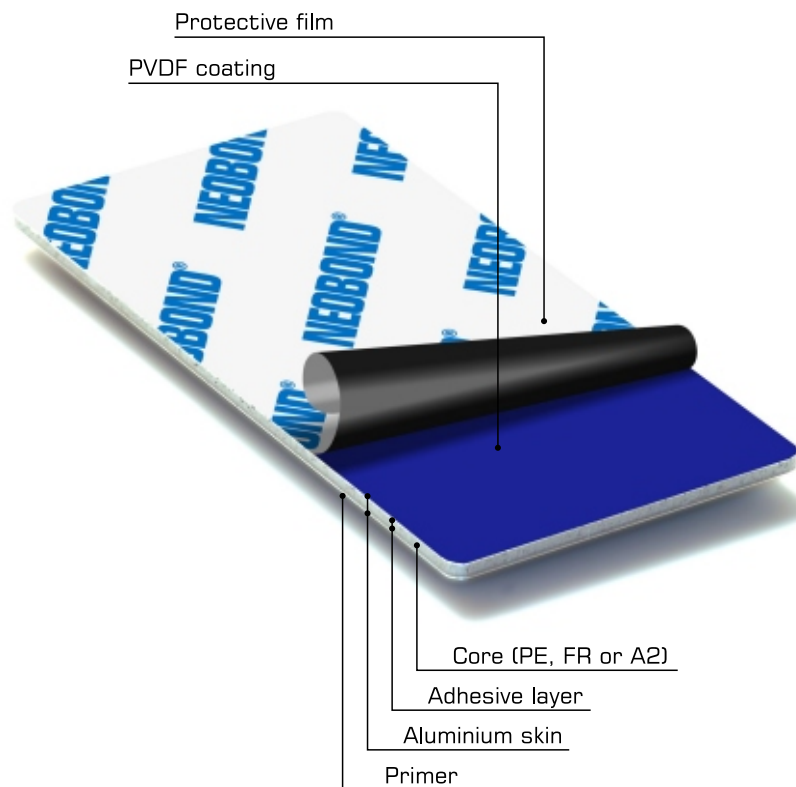
RAL 7024 Graphite grey



WI-730 Black

SOLID&METALLIC

- NEOBOND Solid & Metallic Series offer a variety of solid colours from pure white and pastel grey to vibrant red, blue, green and yellow.
- NEOBOND Solid colours panels can be an excellent option for any architectural solution when the special effects are not required.
- NEOBOND Metallic colours bring a classy metallic shimmer to the panels, which is changing under numerous light settings and angles of view, providing the picturesque impression of the facade surface and making it more vivid.



-
- Each colour in current colour chart is represented for display purposes only. Please check the actual colour accordance to your project with our sample.
 - Colour differences may occur between panels from different production batches. The entire required amount of material for the project must be ordered as one batch.
 - It is recommended to install the composite panels in the same direction, as indicated by the arrows on the protective film to avoid differences in gloss and reflection (for metallic colours).
 - Any colour from the RAL, Pantone, NCS colour chart and custom colours can be supplied. Minimum order quantity is applicable.
 - Product series available as NEOBOND, NEOBOND/FR, NEOBOND/A2 (colour variation may occur between different product types, due to different production processes. It is recommended not to mix different product types, if colour consistency is required).

NEOBOND®

Aluminium Composite Panel

Unlimited Possibilities

**Williams Ltd., 5 Zemitana str.,
Riga LV-1012, Latvia
Phone: (+371) 67843779;
Mobile: (+371) 26396890;
e-mail: info@williamscomposite.com
<http://williamscomposite.com>**