



CROWN DÉCOR PVT.LTD.

6 Patel Avenue, 1st Floor,
S.G. Highway, Near Gurudwara,
Ahmedabad - 380 059, Gujarat, India.
Contact : +91 79 4001 7979
www.royaletouche.com

FACTORY

419/1, Radhe Industrial Estate,
Tajpur Road, Dist. Ahmedabad
Changodar - 382 213, Gujarat, India.

MARKETING OFFICE

2/A N Malayalay. 2nd Floor,
3 Woodburn Park, Kolkata - 700 020, India.
Ph : +91 33 4066 0166, 2283 0166
E-mail : kanishka@royaletouche.com



XTERIOR COMPACT LAMINATES



www.royaletouche.com



INTRODUCTION

Crown Decor, a Royale Touche laminate group company, a niche Luxury Laminate brand from India, was launched in 1978 with the idea that a laminate has unlimited potential in surface decor. They made people to look at laminates as a resilient and flexible product. They gave laminates a complete makeover with unparalleled endless design and textures. The product has rich luxurious feel that adds aesthetic value to interiors that makes architect, end users and interior designer’s life easy.

With over 45 years of experience in the manufacturing industry, group has seven production lines of high pressure laminates producing over 18 million sq mtr. annually in 4 different sizes and in thickness ranging from 0.6mm to 25mm which are made of 100% phenolic resin. The laminates are manufactured at a qualifying facility equipped with imported machinery from Spain, Italy and Germany. Products are created with imported design papers made from highly stable and resistant pigments which guarantees freshness years after years of its use. All the products bear Greenguard, Greenbuilding, FSC, CE, EN 438 and Fire Rating Certification. It’s an Indian Power Brand classified product.

Crown Decor also produces Compact Laminates in interior and exterior grade. Interior grade laminates are used for Toilet Cubicles and Partitions, Lockers, Wall Panelling etc. In addition they also make Chemical Resistant Laboratory Grade Compact Laminates suitable for manufacture of Lab Furniture.

Exterior Grade Laminates are used for Building Facade/Cladding, Balconies, Verandah, Fences Outdoor Benches, Table Tops etc, also in production range are anti skid / anti slippery surface laminates suitable for deck and outdoor flooring application. They have completed several projects pan India and overseas.

Crown Decor is an integrated manufacturer of building and construction products providing hi-pressure laminates, vitrified tiles and synthetic adhesives for global and domestic clients alike.

- | | | |
|---|--|---|
|  Water Resistant |  Heat Resistant |  Resistant To Cigarette Burns |
|  Colourfast |  Scratch Resistant |  Impact Resistant |
|  Environment Friendly |  Stain Resistant |  Sleek Modern Design |
|  Rot Resistant |  Stability |  Suitable for Contract use |
|  Flame Resistant |  Weather Resistant |  Indoor and Outdoor use |
|  Easy To Clean |  Minimum Maintenance | |

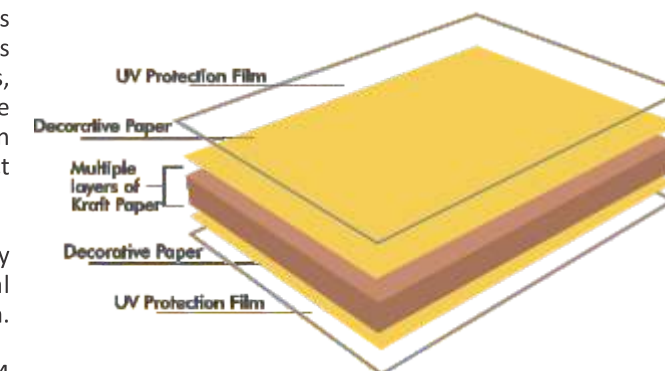


COMPOSITION

CrownXCL is a high pressure structural laminate, built up from multiple layers of kraft papers to produce laminate in thickness from 2 to 25mm. It has a decorative face on both sides and is ideal for Building Facade/Cladding, Balconies, Verandah, Fences, Outdoor Benches, Table Tops, Anti Skid / Anti Slippery surface laminates suitable for deck and outdoor flooring application etc. It is particularly suited to use in high humidity, high impact area.

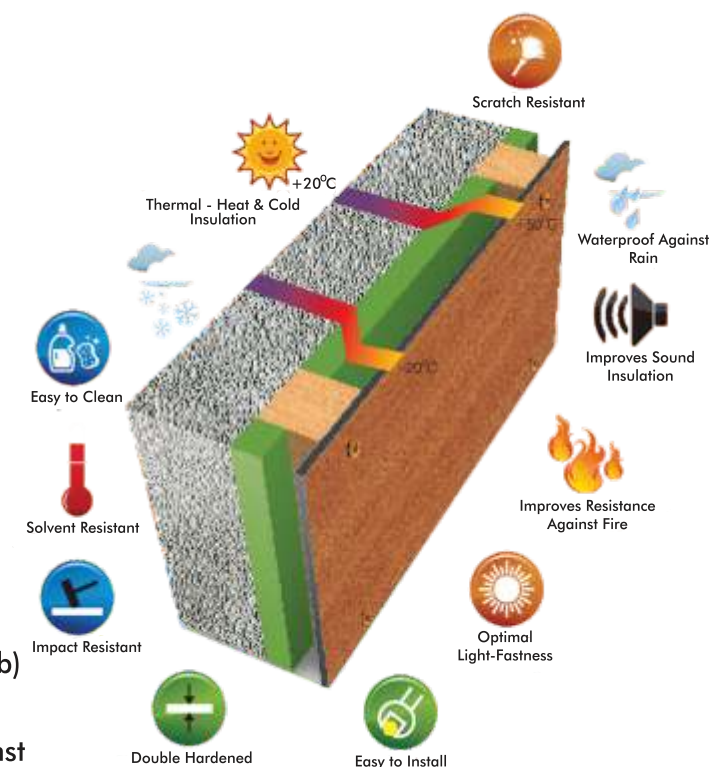
With a density of 1.45gms/cm³. Compact is impressively strong, damage resistant and has remarkable structural stability, requiring no substrate support in thickness over 6mm.

CrownXCL exterior compact laminate conforms to EN 438:4 and meets conformity with European Consumer Safety, Health and Environmental requirements.



FEATURES & BENEFITS

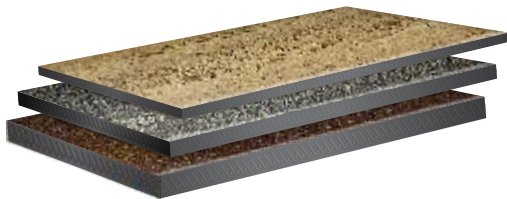
- ★ Decorative
- ★ High Weather Resistance
- ★ Optimal Light Fastness
- ★ Scratch Resistance
- ★ Solvent Resistance
- ★ Self Supporting
- ★ Impact Resistance
- ★ Heat Resistance
- ★ Fire Resistance
- ★ Easy to Clean and Maintain
- ★ Overall Light Weight Substructure and facade
- ★ Sustainability
- ★ Quick and Easy to Assemble
- ★ Increased Sound Proofing Function (upto 15 Db)
- ★ Decrease Air Conditioning Costs
- ★ Provide Wall Protection & Heat Insulation against Atmospheric Precipitation



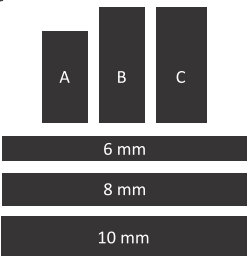
DIMENSIONS 2440 x 1220 mm
3050 x 1220 mm
3050 x 1300 mm*
3660 x 1830 mm*
*(Available in Selected Colours)

DECOR Double - sided Decor
Single - sided Decor
(available upon request)

THICKNESS 6, 8 and 10 mm



FINISH Suede Finish
Note : Custom finishes
available upon request
in 1220 x 2440mm size
only.



PERFORMANCE

Properties

| | Standard Value |
|---|--|
| Apparent Density | 1.35g/cm ³ |
| Flexural Strength | 80N/mm ² |
| Modulus of elasticity | 9000N/mm ² |
| Tensile Strength | 60N/mm ² |
| Dimentional stability at elevated temperatures | Lengthwise: 0.40% Crosswise: 0.80% |
| Artificial Weathering | Grey Scale: Rating 3 Appearance: Rating 4 |
| UV-light resistance | Grey Scale: Rating 3 Appearance: Rating 4 |

CrownXCL Value

| |
|--|
| 1.45g/cm ³ |
| 114N/mm ² |
| 13966N/mm ² |
| 66N/mm ² |
| Lengthwise: 0.25% Crosswise: 0.40% |
| Grey Scale: Rating 4 Appearance: Rating 4 |
| Grey Scale: Rating 4 Appearance: Rating 4 |

FIRE BEHAVIOUR

Valid in

Canada
Europe
USA
Canada + USA

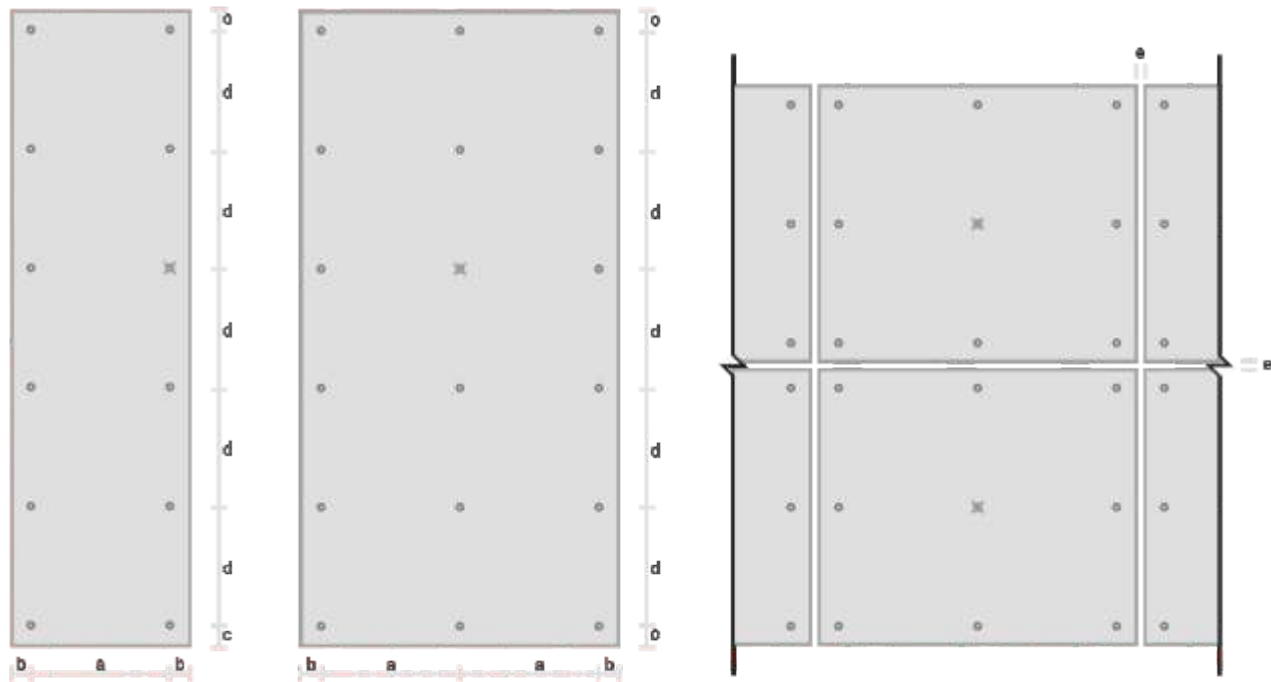
Test Method

CAN/ULC S134
CSN EN 13501-1+A1
NFPA 285
ASTM E 84

CrownXCL Value

Passed
B-s1, d0 (Passed)
Passed
Flame Spread Index: 10
Smoke Developed: 0

SPACING



✕ Represents a fixed point.

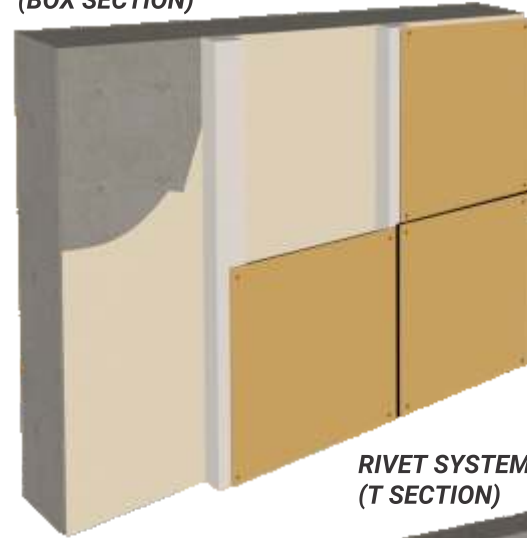
The diagrams above show the optimal space between fasteners and the edge pf the panel. It also displays the optimal spacing between individual panels. These are guidelines and can be altered appropriately depending on the project.

| Panel Thickness * | Maximum Fastener Spacing (a) * | Minimum Edge Distance (b, c) * | Maximum Fastener Spacing (d) * | Expansion Joint (e) * |
|-------------------|--------------------------------|----------------------------------|--------------------------------|-----------------------|
| 6mm | 600mm | 50, 20mm | 600mm | 6-10mm |
| 8mm | 750mm | 50, 20mm | 750mm | 6-10mm |
| 10mm | 900mm | 50, 20mm | 900mm | 6-10mm |

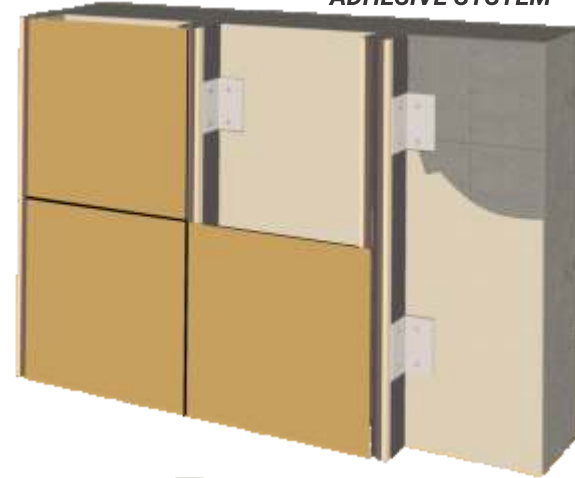
INSTALLATION SYSTEM

CrownXCL installation system is a thermally broken, ventilated rainscreen system that provides maximum efficiency at cost savings compared to alternatives. CrownXCL installation prevents thermal bridging caused by other installation systems. This lessens the environmental impact of the building and can provide significant heating and cooling cost savings for your building. CrownXCL installation system provides ventilation behind the panel, which prevents moisture buildup and increases the longevity of panels.

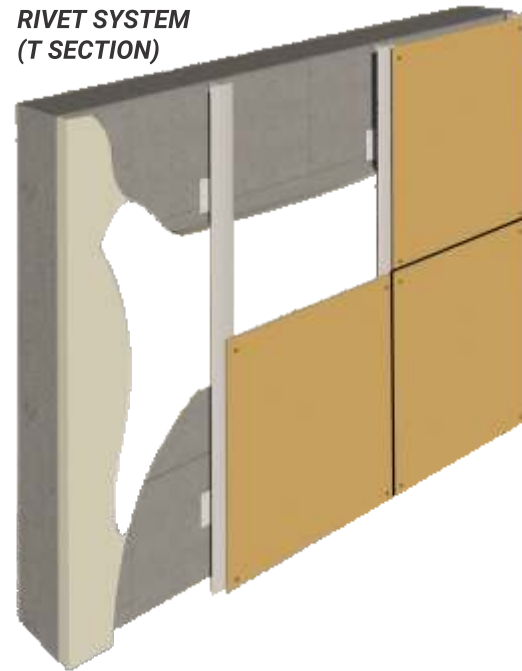
**RIVET SYSTEM
(BOX SECTION)**



ADHESIVE SYSTEM



**RIVET SYSTEM
(T SECTION)**



APPLICATIONS

LOUVERS



FACADE



GATE



PARAGOLA



SHOP FRONT



BALCONY



PROJECT PICTURES



PROJECT PICTURES



PROJECT PICTURES



PROJECT PICTURES



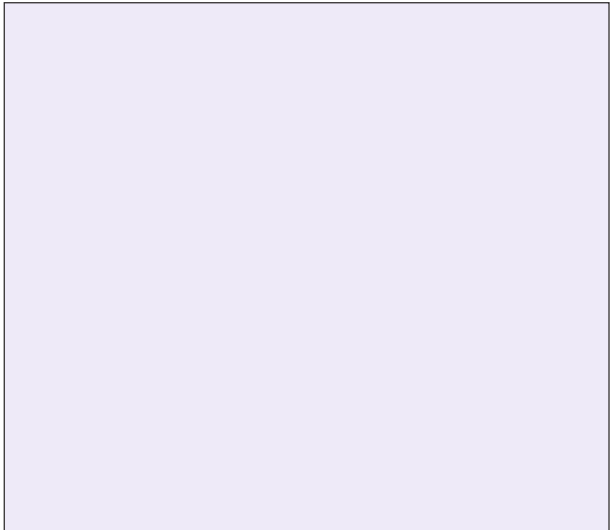
PROJECT PICTURES



PROJECT PICTURES



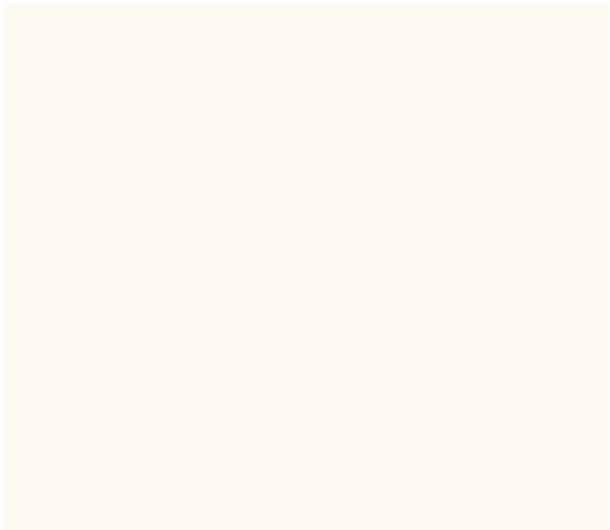
COLOUR RANGE



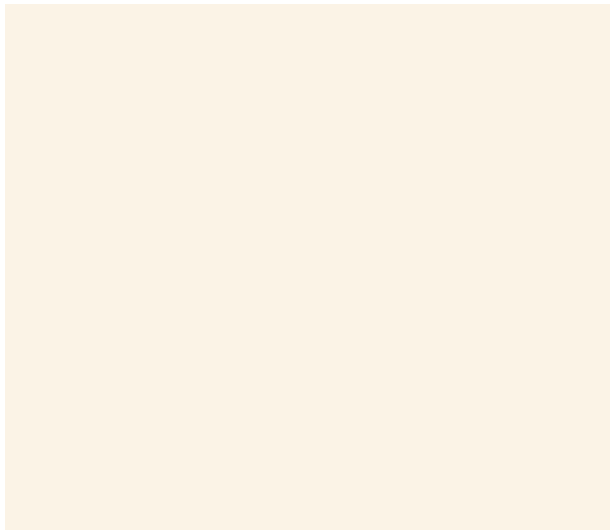
10X LIGHT BLUE WHITE



11X BLACK

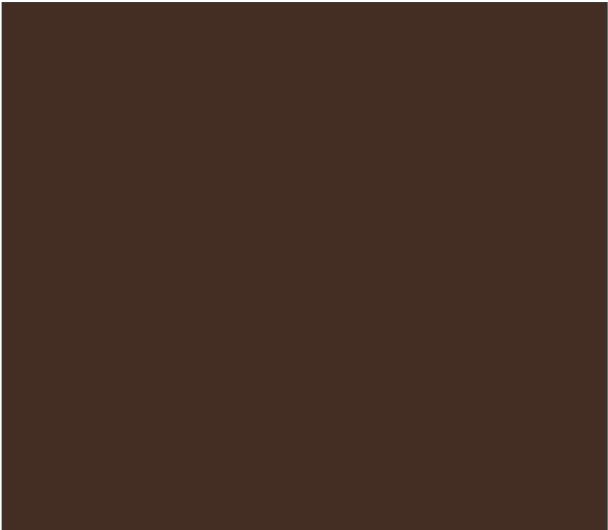


13X EGG WHITE

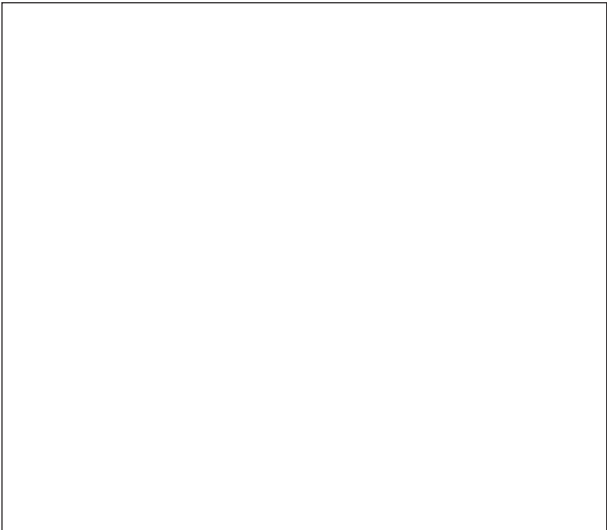


17X MYSORE IVORY

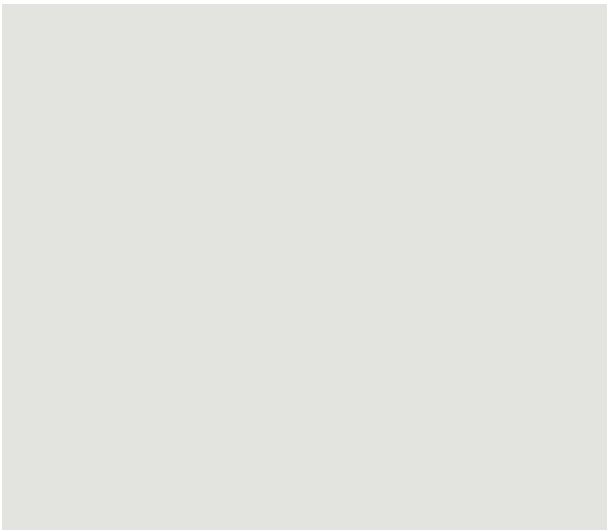
COLOUR RANGE



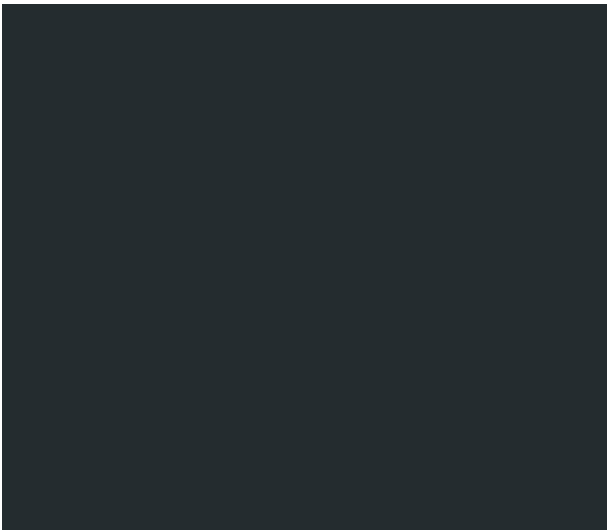
23X COFFEE



601X ARCTIC WHITE



860X SILVER GREY



603X DARK GREY

COLOUR RANGE



604X

GREY



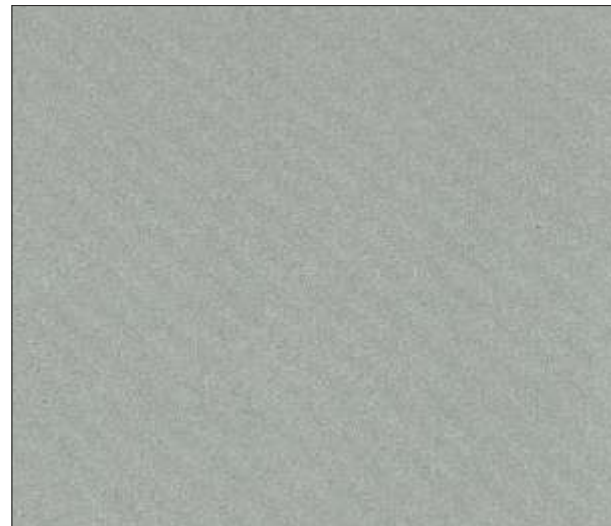
605X

RED



606X

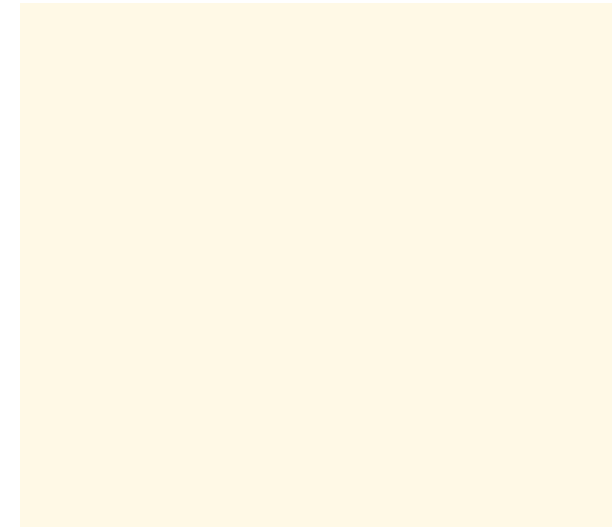
GREEN



607X

SILVER METALLIC PRINT

COLOUR RANGE



608X

BEIGE - F033



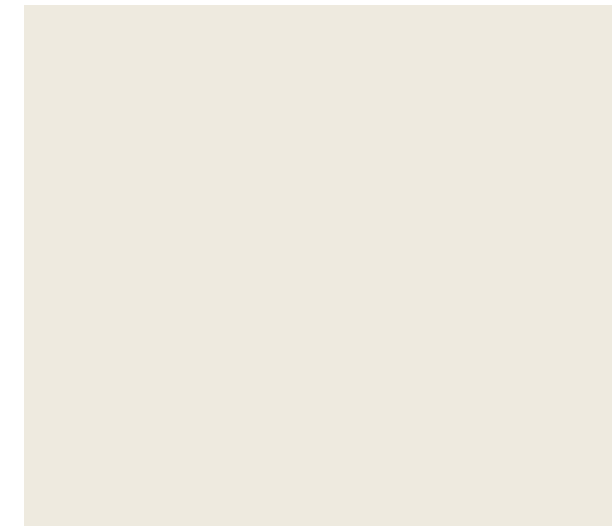
609X

BLUE - F031



610X

GREY - F019



611X

BEIGE - F032

COLOUR RANGE



612X

GRIS FONSE



613X

MONUMENT GREEN



614X

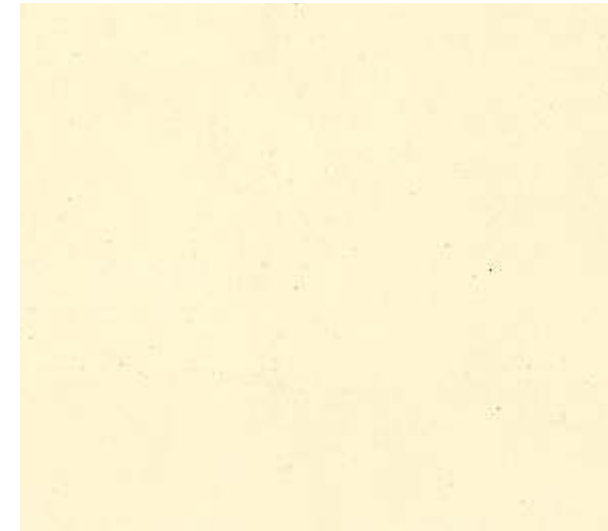
PEBBLE GREY



615X

METAL GREY

COLOUR RANGE



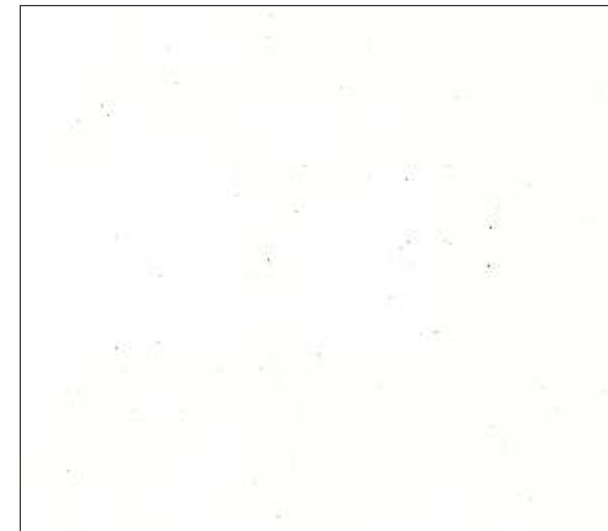
616X

BEIGE



617X

OLIVE GREEN



618X

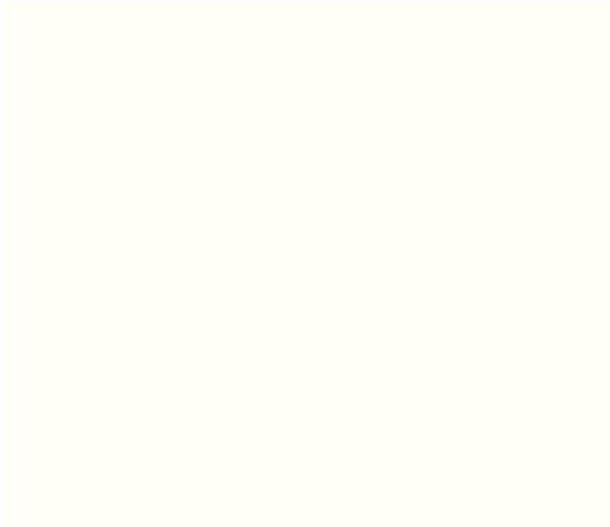
WHITE



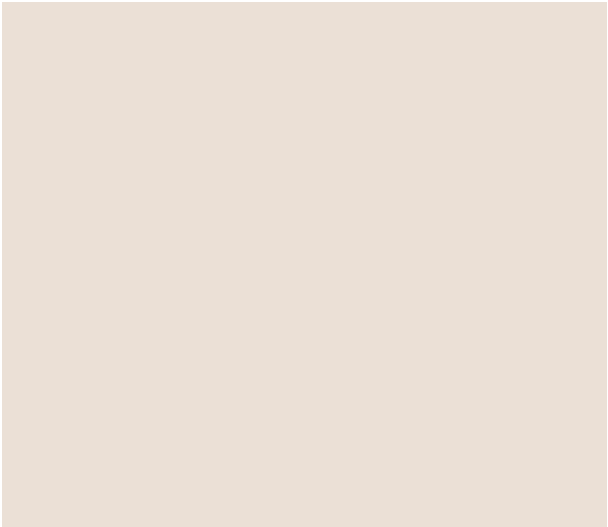
619X

GREY

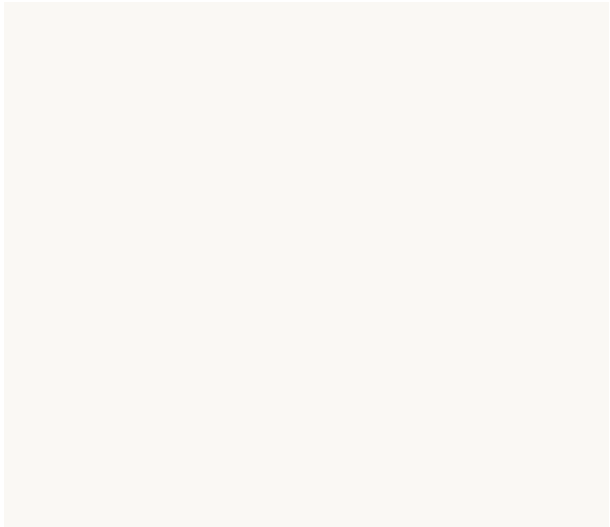
COLOUR RANGE



856X FROSTY WHITE



871X BEIGE (IRISH CREAM)



851X COLD WHITE



RT 26 LYON WALNUT EXCL

COLOUR RANGE



RT 1334 COLOSSED



631X BAMBUS

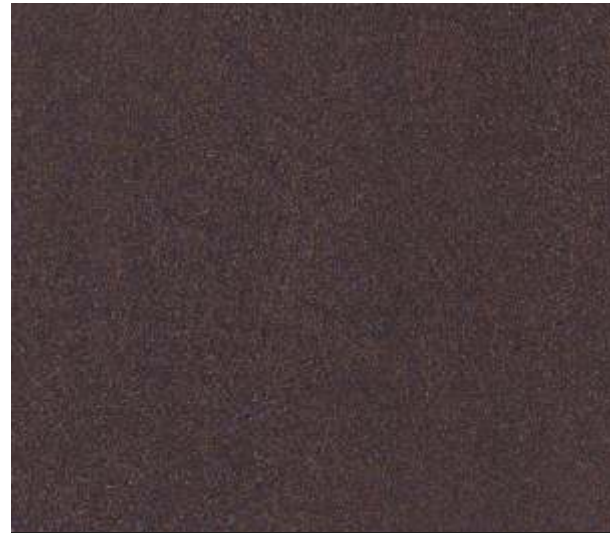


632X BAMBUS



633X BAMBUS

COLOUR RANGE



634X

BAMBUS



635X

BAMBUS



636X

BROOKLYN



637X

BROOKLYN

COLOUR RANGE



638X

PINARA



639X

BANANA ABACA



640X

CANYON VINTAGE PINE



641X

CANYON APPLE

COLOUR RANGE



642X CANYON MONUMENT OAK



643X CANYON MONUMENT OAK



644X CANYON MONUMENT OAK



645X AVEIRO ESCHÉ

COLOUR RANGE



646X BELIDOR



647X GREYSTONE



648X ORIENTAL BROWN



649X CARIO BEECH

COLOUR RANGE



650X

NOTICAL WOOD



651X

STUCCO



652X

NOTICAL WOOD (RED)



653X

SERAVEZZA

COLOUR RANGE



654X

STATUARIO VENATO



655X

BROOKLYN



656X

MONTPELLIER



657X

KUBIKUS

COLOUR RANGE



658X

TABO SLATE



659X

METALIC OXID



660X

METALIC OXID



661X

GREYSTONE

COLOUR RANGE



662X

MAYFIELD FABRIC



663X

MAYFIELD FABRIC



664X

TEX STONE



665X

WALNUT RIGATO

COLOUR RANGE



EXP 51 NOVECENTO PINE



910X CRIAZA PEAR



RT 1330 MOROCCAN BROWN



EXP 55 INDONESIAN PALM

COLOUR RANGE



RC 35 SAPELI



RT 1414 GRACE MAPLE



RT 27 NORTH WALNUT EXCL



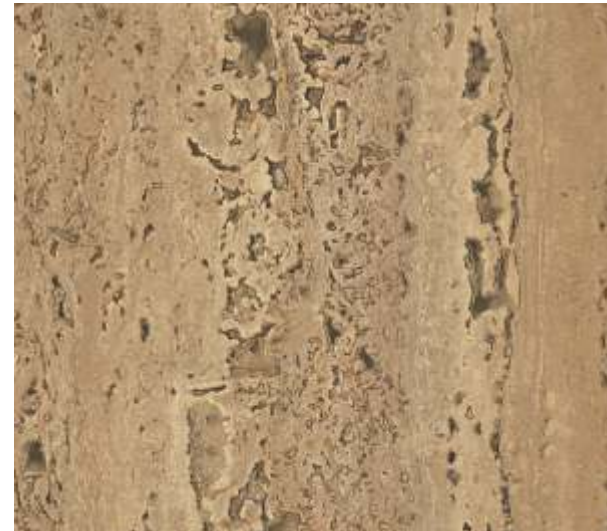
RT 1476 SILVER IO

COLOUR RANGE



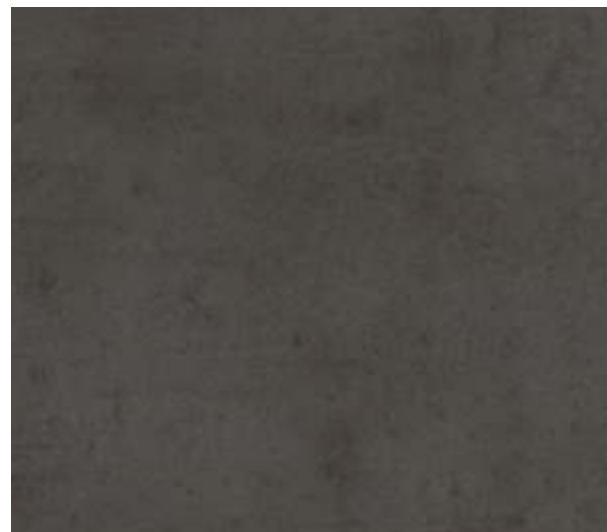
RT 1521

MANHATTAN



RT 1335

COLOSSED



RT 1522

MANHATTAN



RT 1520

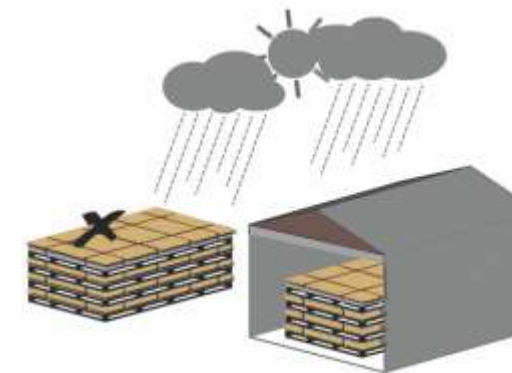
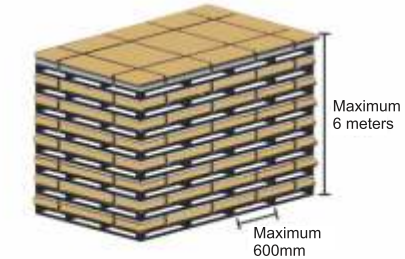
MANHATTAN

HANDLING & LOGISTIC GUIDELINES

Handle Compact Panels with care in order not to damage the edges and surface of high quality material. In spite of the excellent surface hardness and the protection film, the stack weight of compact weight panel is a possible cause of damage. Therefore, any form of dirt or dust between these panels must be avoided. Panels must be secured against slippages during transportation. When loading and unloading, the panels must be lifted and not pushed or pulled over the edges.

During the handling and installation of compact panels, one must use protection equipments specially hand gloves. Compact panels must be stacked horizontally on flat and stable support with supporting panels. These panels must lie completely flat and the cover plates should be left on the stack. The top cover should be weighed down and must be wrapped by plastic.

The Compact panels are to be stored in a closed room under normal climatic conditions to avoid excess humidity and heat. Appropriate distance to be maintained between each side of the panel.



CERTIFICATIONS



TECHNICAL SPECIFICATIONS

| EXTERIOR GRADE COMPACT LAMINATE SIZE : 1220mm x 2440mm & 1220mm x 3050mm | | | |
|---|--|---|------------------------------------|
| Sl. No. | Properties | EDF Grade Specification As per EN 438 - part 6 | CROWN LAMINATES & Legend Values |
| 1 | Thickness (mm.) (max.) | | |
| | 5.00 ≤ t < 8.00 (mm.) | 6.00 ± 0.40mm. | 6.15 mm. |
| 2 | Length (mm.) | 2440.00 + 10.00/-0.00mm. | 2441.00 mm. |
| 3 | Width (mm.) | 1220.00 + 10.00/-0.00mm. | 1221.00 mm. |
| 4 | Edge Straightness mm. (max) | 1.50 mm./m. | 0.90 mm./m. |
| 5 | Edge Squareness mm. (max) | 1.50 mm./m. | 0.80 mm./m. |
| 6 | Flatness mm. (max) | | |
| | 2.00 ≤ t < 6.00 mm. | 8.00 mm./m. | 4.00 mm./m. |
| | 6.00 ≤ t < 10.00 mm. | 5.00 mm./m. | 2.50 mm./m. |
| | t ≥ 10.00 mm. | 3.00 mm./m. | 1.30 mm./m. |
| 7 | Flexural Modulus (min.) | 9000 Mpa. | 13966 Mpa. |
| 8 | Flexural Strength (min.) | 80 Mpa. | 114 Mpa. |
| 9 | Tensile Strength (min.) | 60 Mpa. | 66 Mpa. |
| 10 | Density, gm./cm3 (min.) | 1.35 gm./cm3 | 1.45 gm./cm3 |
| 11 | Resistance to impact by large diameter ball. | | |
| | a) Drop height mm. (min.) | | |
| | 2.00 ≤ t < 5.00 mm. (t=nominal thickness) | 1400 mm. | 1600 mm. |
| | t ≥ 5.00 mm. | 1800 mm. | 2000 mm. |
| 12 | b) Indentation dia. mm. (max.) | 10 mm. | 6 mm. |
| | Resistance to wet conditions | | |
| | a) Mass increase (%) max. | | |
| | 2.00 ≤ t < 5.00 mm. (t=nominal thickness) | 10% | 4% |
| 13 | t ≥ 5.00 mm. | 8% | 3% |
| | b) Appearance not worse than | Rating 4 | Rating 5 |
| | Dimensional stability at elevated temperature | | |
| | 2.00 ≤ t < 5.00 mm. (t=nominal thickness) | | |
| 14 | a) Longitudinal, % max | 0.30% | 0.25% |
| | b) Transverse, % max | 0.60% | 0.40% |
| | t ≥ 5.00 mm. | | |
| | a) Longitudinal, % max | 0.30% | 0.12% |
| 15 | b) Transverse, % max | 0.60% | 0.10% |
| | Resistance to climatic shock | | |
| | a) Appearance | Rating 4 | Rating 4 |
| | b) Flexural Strength index, min. | 0.95 | 1.10 |
| 16 | c) Flexural Modulus index, min. | 0.95 | 1.50 |
| | Resistance to artificial weathering (Including Light Fastness) | After 650MJ/m2 radiant Exposure (1500 hrs) | 1500 hrs |
| | a) Gray scale rating (not worse than) | Rating 3 | Rating 4 |
| | b) Apperance (min.) | Rating 4 | Rating 4 |
| 17 | Resistance to UV light | After 1500 hrs Exposure | 1500 hrs |
| | a) Gray scale rating (not worse than) | Rating 3 | Rating 4 |
| | b) Appearance (min.) | Rating 4 | Rating 4 |
| | Spread of Flame | Class 1 | Class 1 |
| Remark : E (Exterior Grade), D (Serve Use), F (Flame Retardant Grade) | | | |

ACCESSORIES

| | | | | |
|---|---|--|---|--|
|  |  |  |  |  |
| BOX SECTION | DEAD LOAD BRACKET | WINDLOAD BRACKET | U BRACKET | T - SECTION |
|  |  |  |  |  |
| L BRACKET | NUT BOLT | FASTERNER | ALUMINIUM C + RAIL | FIXED POINT STAPLE |
|  |  |  |  |  |
| RIVET | MOUTH PIECE | SELF DRILLING SCREW | PRIMER | SILICONE |
|  |  |  |  | |
| TAPE | CUTTING MACHINE | DRILLING MACHINE | RIVET GUN | |

INDEX

| S.No | Colour No. | Colour Name | Page No. |
|------|------------|-----------------------|----------|
| 1 | 10X | Light Blue White | 15 |
| 2 | 11X | Black | 15 |
| 3 | 13X | Egg White | 15 |
| 4 | 17X | Mysore Ivory | 15 |
| 5 | 23X | Coffee | 16 |
| 6 | 601X | Arctic White | 16 |
| 7 | 603X | Dark Grey | 16 |
| 8 | 604X | Grey | 17 |
| 9 | 605X | Red | 17 |
| 10 | 606X | Green | 17 |
| 11 | 607X | Silver Metallic Print | 17 |
| 12 | 608X | Beige - F033 | 18 |
| 13 | 609X | Blue - F031 | 18 |
| 14 | 610X | Grey - F019 | 18 |
| 15 | 611X | Beige - F032 | 18 |
| 16 | 612X | Gris Fonce | 19 |
| 17 | 613X | Monument Green | 19 |
| 18 | 614X | Pebble Grey | 19 |
| 19 | 615X | Metal Grey | 19 |
| 20 | 616X | Beige | 20 |
| 21 | 617X | Green [Oliv Green] | 20 |
| 22 | 618X | White | 20 |
| 23 | 619X | Grey | 20 |
| 24 | 631X | Bambus | 22 |
| 25 | 632X | Bambus | 22 |
| 26 | 633X | Bambus | 22 |
| 27 | 634X | Bambus | 23 |
| 28 | 635X | Bambus | 23 |
| 29 | 636X | Brooklyn | 23 |
| 30 | 637X | Brooklyn | 23 |
| 31 | 638X | Pinara | 24 |
| 32 | 639X | Banana Abaca | 24 |
| 33 | 640X | Canyon Vintage Pine | 24 |
| 34 | 641X | Canyon Apple | 24 |
| 35 | 642X | Canyon Monument Oak | 25 |
| 36 | 643X | Canyon Monument Oak | 25 |
| 37 | 644X | Canyon Monument Oak | 25 |
| 38 | 645X | Aveiro Esche | 25 |
| 39 | 646X | Belidor | 26 |
| 40 | 647X | Greystone | 26 |

| S.No | Colour No. | Colour Name | Page No. |
|------|------------|--------------------|----------|
| 41 | 648X | Oriental Brown | 26 |
| 42 | 649X | Cairo Beech | 26 |
| 43 | 650X | Notical Wood | 27 |
| 44 | 651X | Stucco | 27 |
| 45 | 652X | Notical Wood (red) | 27 |
| 46 | 653X | Seravezza | 27 |
| 47 | 654X | Statuario Venato | 28 |
| 48 | 655X | Brooklyn | 28 |
| 49 | 656X | Montpellier | 28 |
| 50 | 657X | Kubikus | 28 |
| 51 | 658X | Tabo Slate | 29 |
| 52 | 659X | Metalic Oxid | 29 |
| 53 | 660X | Metalic Oxid | 29 |
| 54 | 661X | Greystone | 29 |
| 55 | 662X | Mayfield Fabric | 30 |
| 56 | 663X | Mayfield Fabric | 30 |
| 57 | 664X | Tex Stone | 30 |
| 58 | 665X | Walnut Rigato | 30 |
| 59 | 851X | Cold White | 21 |
| 60 | 856X | Frosty White | 21 |
| 61 | 871X | Beige[irish Cream] | 21 |
| 62 | 910X | Criaza Pear | 31 |
| 63 | EXP 51 | Novecento Pine | 31 |
| 64 | EXP 55 | Indonesian Palm | 31 |
| 65 | RT 26 | Lyon Walnut Excl | 21 |
| 66 | RT 27 | North Walnut Excl | 32 |
| 67 | RC 35 | Sapelli Casco | 32 |
| 68 | RT 1334 | Colosseo | 22 |
| 69 | RT 1335 | Colosseo | 33 |
| 70 | RT 1414 | Grace Mapple | 32 |
| 71 | RT 1476 | Silver Io | 32 |
| 72 | RT 1520 | Manhattan | 33 |
| 73 | RT 1521 | Manhattan | 33 |
| 74 | RT 1522 | Manhattan | 33 |
| 75 | RT 1330 | Moroccan Brown | 31 |

