

2 0 2 5

SHADES OF THE YEAR



AludecoR
Metal Composite Panel

INSPIRE HARMONY
THAT
HAPPY
VIBES
EMOTION AND
POWER

Aludecor

Metal Composite Panel

As a national leader in the metal composite panel industry, Aludecor stands at the forefront of innovation, quality, and sustainability. Our dedication to perfection earned us the European Aluminium Award - ESQR (European Society for Quality Research). With over two decades of expertise, we have consistently led the way in redefining modern architecture through our cutting edge aluminium composite panels (ACPs).

Our state-of-the-art facilities include seven advanced lamination lines, giving us the unmatched capacity to manufacture 9.6 million square meters annually. Aludecor is the only company in India to have a palletising line for manufacturing FR granules, advancing our leadership in safety and technology. Trusted by architects and industry professionals nationwide, we have beautified over 2 lac projects across India and are proud of more than 10,000 projects that have stood the test of time, lasting over a decade.

By blending aesthetic excellence with high-performance solutions, Aludecor continues to inspire creativity and elevate the built environment, all while delivering versatile and durable cladding solutions that meet the evolving demands of modern architecture.

Over **9.6 MILLION SQUARE METER**
annual production capacity

India's only **ACP** company to have
FR CORE PALLETIZING LINE

More than **10,000 PROJECTS**
standing over ten years

Over **2 LAC PROJECTS**
beautified in India

India's only **NABL**
accredited **R&D LAB**

SEVEN STATE-OF-THE-ART
Lamination Lines

Over
450 + SHADES

Available over
250 CITIES across India

India's **OLDEST PAINT COATERS**
in ACP industry



SHADES OF THE YEAR

Colours are an extension of our emotion.

When you want to escape into new, the uncluttered, nature-inspired palette will create space for quiet reflection amidst the chaos. Living in the almost-caffeinated world, there is a growing desire for spaces that feel personal, almost intimate, that can maintain the delicate balance between tranquility and subtle sophistication. Creating colourful worlds does not demand attention; instead, it quietly captivates.

The 2025 colour story is more than surface-level beauty. It is a reminder that the spaces we inhabit should not only be seen but experienced on a deeper, more emotional level. The blushed tones, muted hues, earthy neutrals provide a touch of nature's resilience. When paired with more vibrant accents—like floral brights and beach-like blues—they form a harmonious dance between nostalgia and modernity.

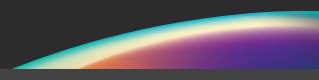
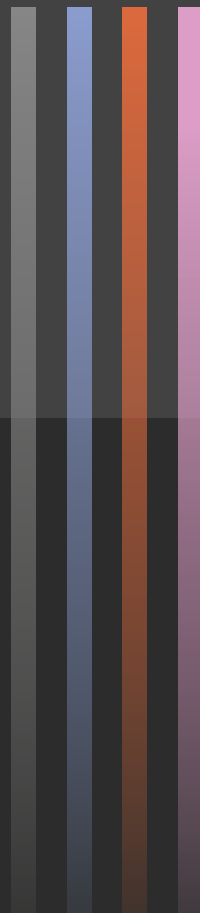
The science behind this lies in how these colours interact with light. Pastels diffuse natural light gently, creating a radiant glow that enhances architectural shapes and textures without overwhelming the senses. When applied to facades, these colours form a bridge between nature and structure, crafting spaces that resonate emotionally and aesthetically.

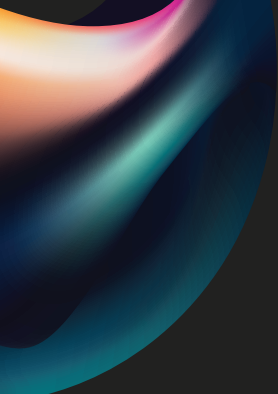
Aludacor worked on colours of the future.

Keeping up with the rhythm of the architectural design which increasingly intertwines with emotional resonance, it carefully chose the palette not just for their aesthetic appeal but for the way they nurture our innate need for comfort, individuality, and expression. These colours do not simply adorn a space, they encourage moments of quiet introspection amidst the noise of modern life.

AludecoR
Metal Composite Panel

SHADES OF THE YEAR





12

SHADES

EXPLORE THE MAGIC OF TWELVE AMAZING SHADES
THAT EXEMPLIFY THEIR INNOVATIVE EXISTENCE AND
POWER TO CHANGE THE WAY YOU LIVE





CARMINE



FOXTONS



PLATINUM GREY



MOSS



FOGSTONE



TANGERINE



HEATHER



MAGNOLIA



CARNATION



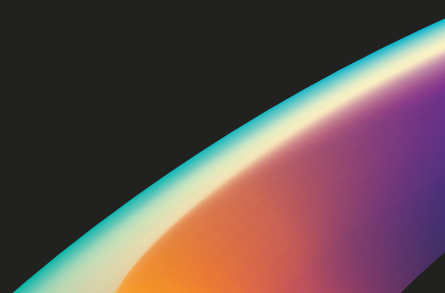
GERBERA



SKYMIST



DAFFODIL







AD 2509 | CARMINE



The striking shade of red adds a dramatic flair to interiors. Its bold hue enriches the décor, infusing spaces with a sense of energy and enthusiasm, resulting in a lively and inviting atmosphere



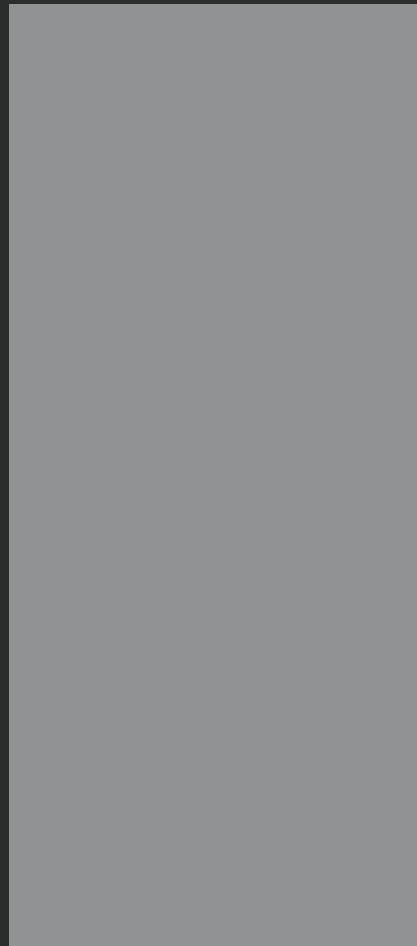
SHADES OF THE YEAR



AD 2502
PLATINUM GREY



Its cool undertones provide a polished backdrop, allowing surrounding elements to stand out beautifully. Platinum grey's simplicity creates a distinctive presence, ensuring it remains a favoured selection in the world of decor.



AD 2505
FOGSTONE



This versatile colour pairs well with various design styles, creating a balanced ambiance while allowing other elements to shine. Fogstone effortlessly enhances the overall aesthetic, providing a beautiful backdrop that enriches the character of your space.



SHADES OF THE YEAR 





AD 2506
HEATHER



This gentle colour brings a unique charm to any space. Its distinctive quality creates a peaceful atmosphere, contributing a soothing influence that enhances the surroundings attractively.



AD 2507
CARNATION



This stunning pink shade radiates charm and joy. It brightens any space, creating an atmosphere that evokes happiness and adds a touch of beauty.





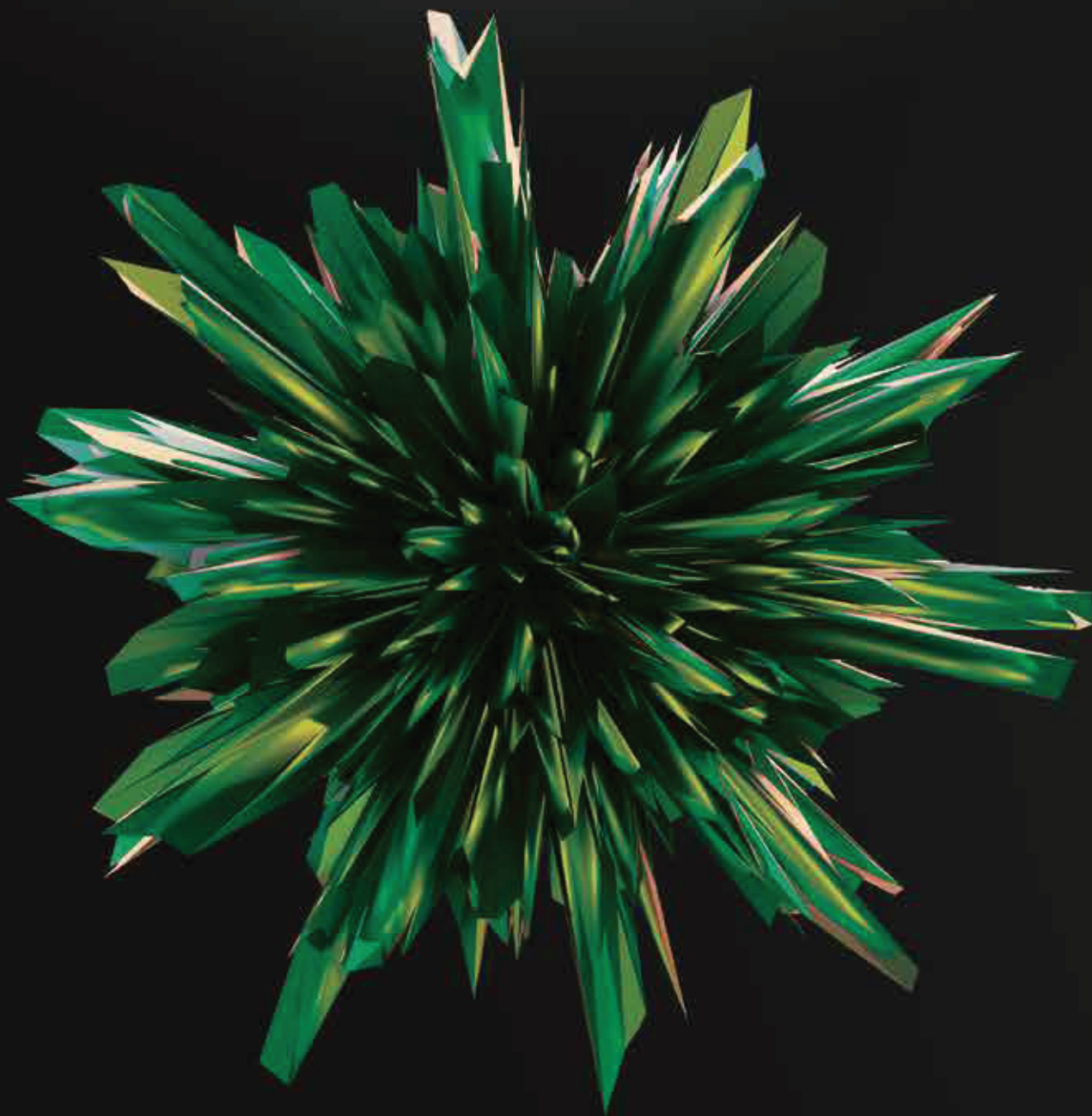


AD 2504 | SKYMIST



A breezy blue captures the charm of clear skies. It evokes feelings of openness and clarity, providing a cool setting that inspires creativity and peace.







AD 2510
FOXTONS



A muted green that reflects the tranquillity of nature. This calming colour creates a refreshing backdrop, fostering a peaceful atmosphere that enhances surrounding elements.



AD 2508
MOSS



A rich green reminiscent of flourishing landscapes. This shade infuses spaces with a touch of vitality, grounding the decor while celebrating nature's beauty.



SHADES OF THE YEAR 





AD 2512
TANGERINE



Tangerine is an uplifting orange shade that illuminates interiors with its brightness. Its distinctive presence enhances any space, inspiring creativity and leaving a lasting impression on the overall setup.



AD 2503
MAGNOLIA



A pleasant cream tone that radiates simplicity and grace. It enriches spaces with a light, neutral quality, making it a versatile choice that elevates any style.



SHADES OF THE YEAR



AD 2511
GERBERA



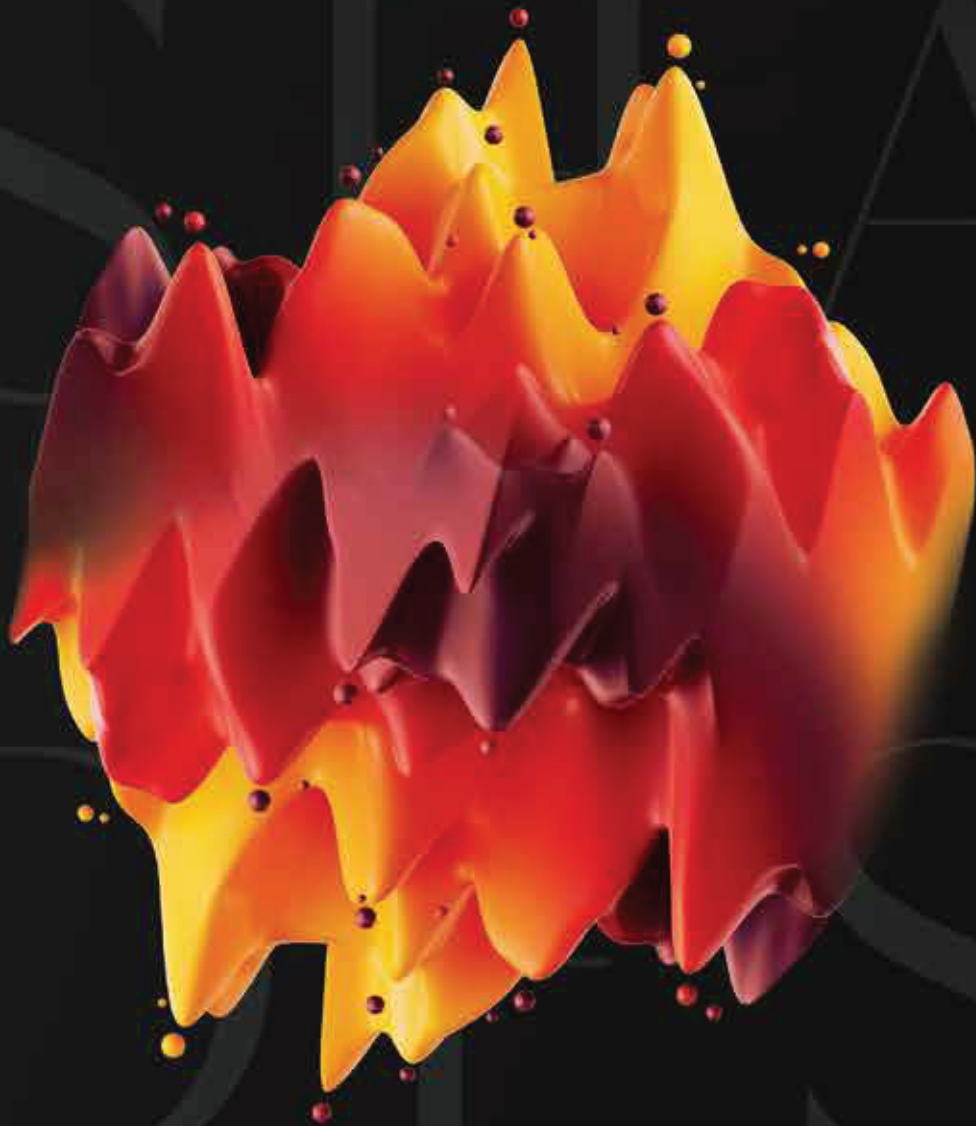
A cheerful hue adds a playful touch to any design, ensuring it stands out while maintaining a harmonious balance within the space, resulting in a setting that feels both engaging and dynamic.



AD 2501
DAFFODIL



A bright shade of yellow evokes the freshness of sunrise and the beauty of blooming flowers, making it an ideal choice for the uplifting space



AludecoR
Metal Composite Panel



Martin Burn Building Suite 52, Floor 5, 1 RN Mukherjee Road, Kolkata 700001

+91 33 4027 6600

1800 102 0407 (TollFree)

Email: info@aludecor.com

Website: www.aludecor.com

CIN: U27203WB2004PTC099221

An ISO 9001:2015 | 14001:2015 | 45001:2018 Certified Company

Follow us on :