

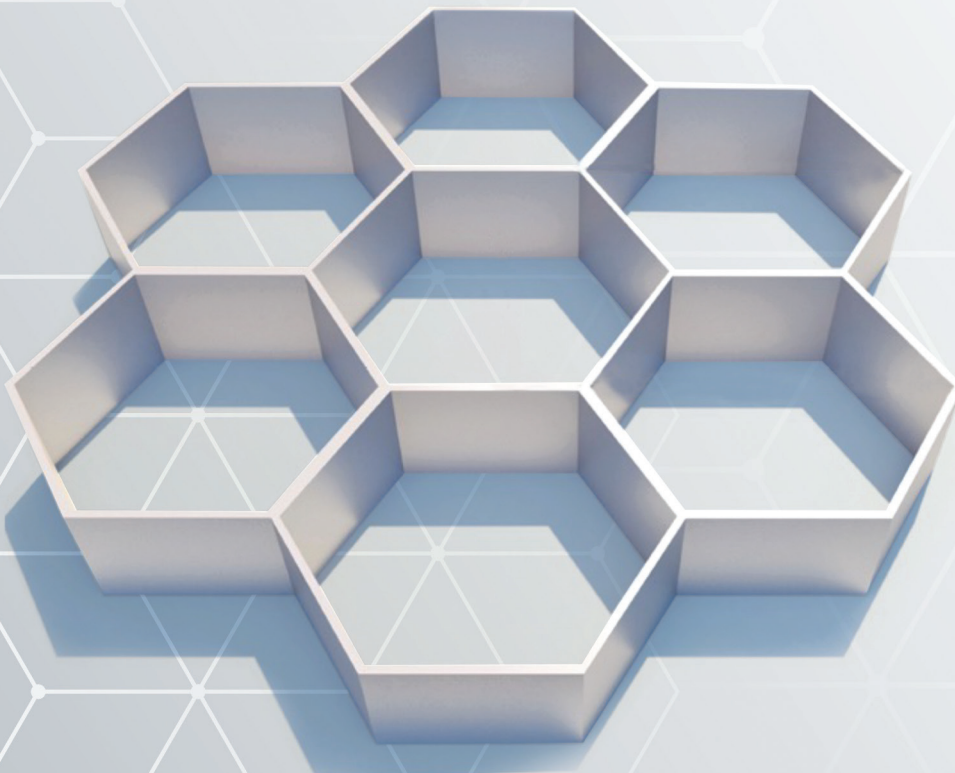
THE NEX GEN

INSPIRATION FOR
YOUR CREATIVITY

About Us

Aludecor is a leading brand in the premium Metal Composite Panel (MCP) industry in India. With its focus on delivering best-in-the-class MCPs, sustainable practices, and personalised support, Aludecor continues to shape the architectural landscape of India, providing inspiring and durable construction ideas, corporate identity, and modern infra solutions.

Since its inception, Aludecor has been at the forefront of delivering pioneering MCP solutions. Combining advanced technology, superior craftsmanship, and a deep understanding of market trends, we have created products that enhance the aesthetics and functionality of modern buildings.



Introduction:

In the dynamic world of architectural design and construction, innovation is the cornerstone of progress. As buildings reach new heights and push the boundaries of design, the need for cutting-edge technology becomes increasingly essential. Enter NexComb, the revolutionary aluminium honeycomb panel system developed by Aludecor – a name synonymous with excellence and innovation in the construction industry.

About NexComb:

NexComb represents a paradigm shift in the realm of architectural panelling, providing a remarkable combination of strength, versatility, and aesthetic appeal. Crafted with meticulous attention to detail, this groundbreaking product has swiftly emerged as a game-changer in the world of building materials.

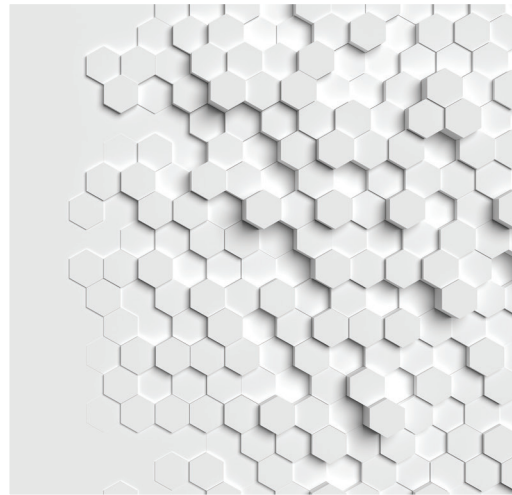
NexComb is an aluminium honeycomb panel that embodies the perfect marriage between form and function. Its uniquely constructed core involves a honeycomb structure formed by bonding a series of aluminium hexagonal cells together, creating an immensely strong yet lightweight composite panel. This ingenious design offers a multitude of advantages, making NexComb the go-to choice for architects, engineers, and designers seeking a material that is both reliable and visually striking.

One of the standout features of NexComb is its exceptional strength-to-weight ratio. The aluminium honeycomb core provides outstanding structural integrity, allowing for large panel sizes without compromising its rigidity. This attribute not only ensures the durability and longevity of the panels but also offers immense design flexibility, enabling architects to push the boundaries of creativity and construct awe-inspiring structures that captivate the imagination.



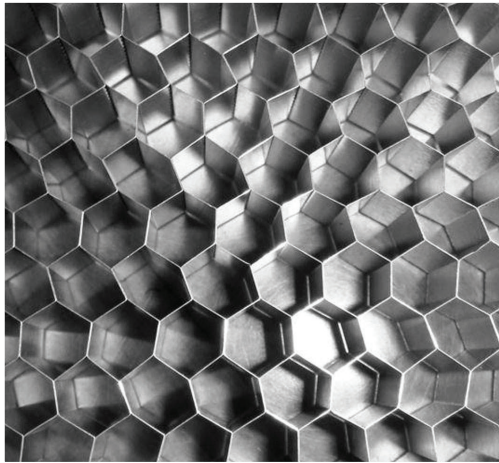
Beyond its impressive strength, NexComb boasts exceptional resistance to various environmental factors. Its premium quality paint (coating) makes it impervious to corrosion, ensuring that the panels remain visually stunning even in harsh weather conditions.

The versatility of NexComb knows no bounds, as it can be customized to suit a wide range of design preferences. With a plethora of colors available, architects and designers can unleash their creativity and bring their visions to life. Whether it's sleek and modern, rustic and timeless, or anything in between, NexComb offers an extensive palette of options to fulfil every design aspiration.



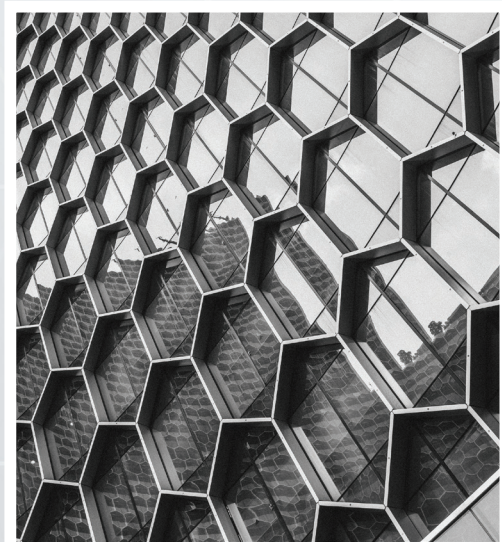
Furthermore, NexComb panels are easy to install, allowing for efficient and hassle-free construction processes. The lightweight nature of the honeycomb panels simplifies handling, reducing installation time and costs without compromising on quality. This makes NexComb an ideal choice for projects that demand both efficiency and excellence.

At the heart of NexComb lies its secret weapon - the indigenously developed Honeycomb core known as NexCore. Crafted meticulously in Aludecor's state-of-the-art



manufacturing facility, this core sets NexComb apart from the rest, giving it unmatched strength, durability, and performance. Here's what makes NexComb a force to be reckoned with:

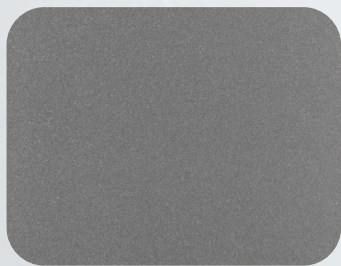
- Equipped with the country's first Double Coat Double Bake line, NexComb boasts a flawless finish that exudes elegance and sophistication.
- NexComb's core, NexCore, is a testament to Aludecor's commitment to innovation. Its indigenous manufacturing ensures the highest quality and exceptional performance.
- Coils procured from Hindalco, a name synonymous with excellence, guarantee the finest raw materials for NexComb.
- The paints used in NexComb are sourced from renowned global brands such as PPG, Beckers, Nippon, and Monopol, ensuring vibrant and long lasting colors.
- With an advanced automatized glue spreader, NexComb embraces cutting-edge technology, delivering flawless adhesion and stability.
- NexComb utilizes the superior 2KPU adhesive sourced from Europe, ensuring a robust bond between the layers, resulting in a panel that withstands the test of time.
- Customization is key! NexComb can be tailored to your precise color preferences, offering endless possibilities for creating stunning architectural designs.
- If you desire a touch of elegance beyond aluminium, NexComb is also available in Zinc and Copper, giving you the freedom to explore unique and breathtaking aesthetics.
- NexComb Honeycomb Panels from Aludecor - where groundbreaking innovation meets impeccable craftsmanship. Unleash your creativity and witness the transformative power of architectural excellence like never before!



Shades Of Nexcomb

With a palette of current colors at your fingertips, NexComb honeycomb panels embrace the essence of now. Unleash your creativity, let your vision take flight, create a sanctuary that rejuvenates day and night. NexComb Honeycomb Panels are not only an exemplary choice for the architectural application like facade cladding, canopy, and roofing but are also perfect to be used for interior applications, such as a false or artistic ceiling, partitions, clean rooms etc.

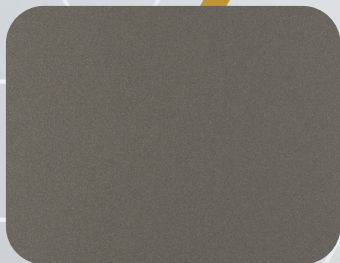
Discover the allure of NexComb honeycomb panels with the following shades and more to transform your space with sophistication and grace.



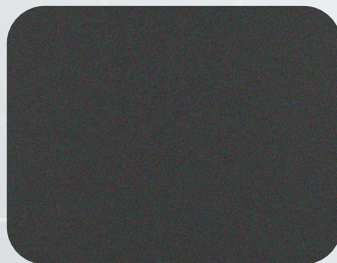
AD-01 Exotic Silver



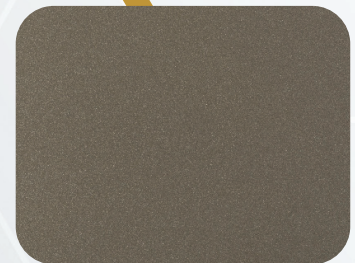
AD-02 Soothing Silver



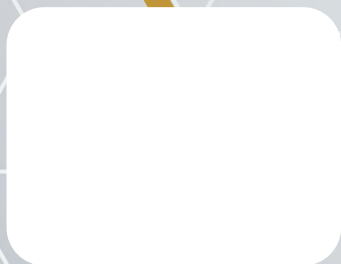
AD-03 Champagne Silver



AD-32 Metallic Black



AD-05 Champagne Gold



AD-21 White



AD-22 Off-white

MOQ for any of the above shades is 600 sq mtrs. For other AD series shades, MOQ is 7200 sq mtrs.
For further details, get in touch with us.

NexComb 25mm

Description

Specifications

Nexcomb

- Panel Thickness In mm
- Panel Weight (Kg/Sqm)

25
4.8

Top Coat

- Coating Type
- Coating Thickness (Microns)

PVDF
>25

Aluminium Alloy Top Sheet

- Sheet Thickness In mm
- Alloy Grade
- Temper

0.7
AA 3105
H - 14/16

Adhesive

- Adhesive Type

2K PU

NexCore

- NexCore Cell Size
- NexCore Thickness
- NexCore Density (Kg/m3)
- NexCore Alloy Grade

19mm
23.8mm
28
3003

Adhesive

- Adhesive Type

2K PU

Aluminium Alloy Bottom Sheet

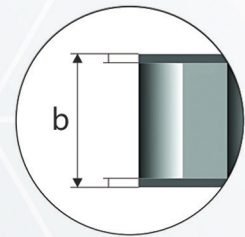
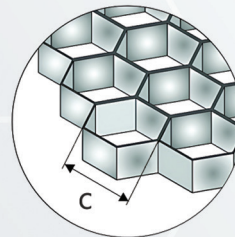
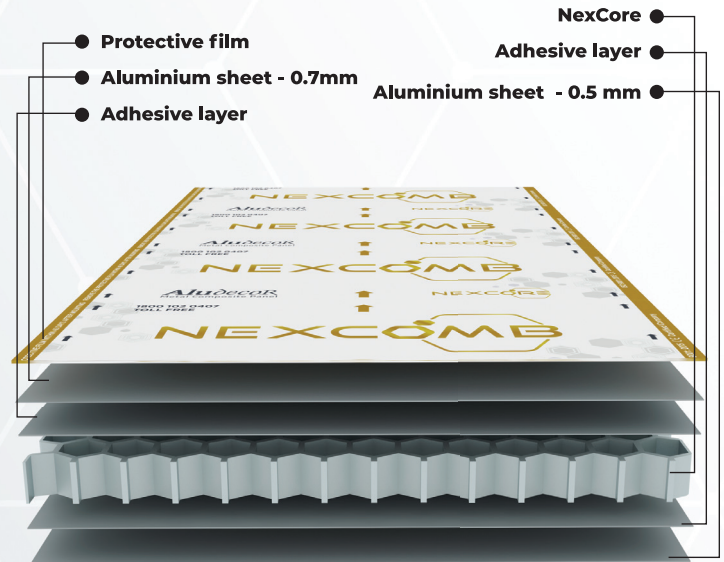
- Sheet Thickness In mm
- Alloy Grade
- Temper

0.50
AA 3105
H - 14/16

Service Coat

- Service Coat Type
- Coating Thickness (Microns)

Polyester
4 -7



Cell height is 23.8mm

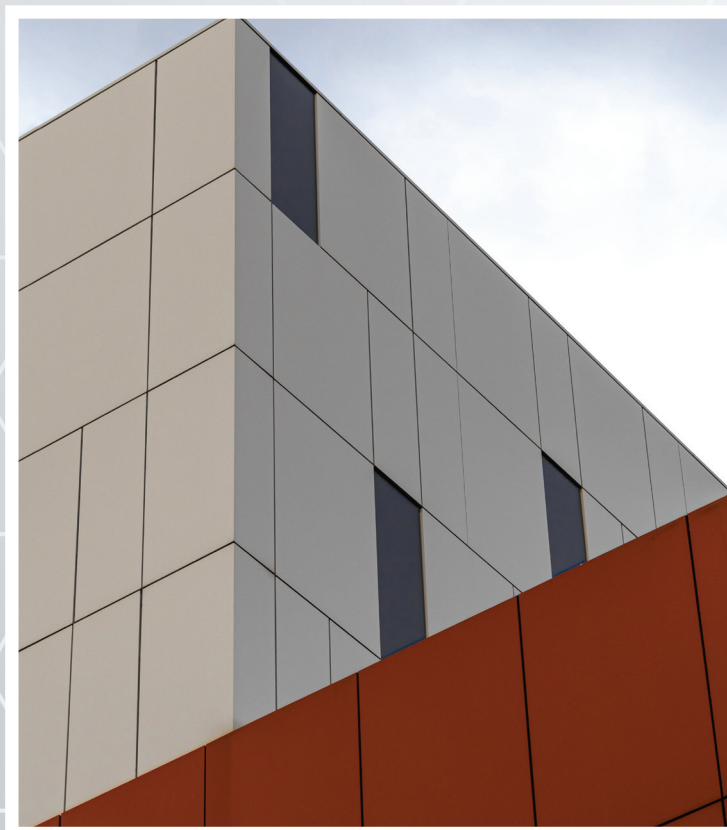
Cell size is 19mm

Cell size (c), Cell height (b)

Special Note

The above-mentioned specifications are our standardized production for Nexcomb 25mm. It can be customized as per requirement. It is also available in:

Aluminium Sheet Alloy Grade	AA 5005 H24
Aluminium Top Sheet	0.5mm
Aluminium Bottom Sheet	0.7mm
Coating Types	FEVE Lumiflon, SDP
NexCore Sizes Available	6mm, 10mm, 14mm



NexComb 12mm

Description

Specifications

NexComb

- Panel Thickness In mm
- Panel Weight (Kg/Sqm)

12
4.5

Top Coat

- Coating Type
- Coating Thickness (Microns)

PVDF
>25

Aluminium Alloy Top Sheet

- Sheet Thickness In mm
- Alloy Grade
- Temper

0.7
AA 3105
H - 14/16

Adhesive

- Adhesive Type

2K PU

NexCore

- NexCore Cell Size
- NexCore Thickness
- NexCore Density (Kg/m³)
- NexCore Alloy Grade

19mm
10.8
28
3003

Adhesive

- Adhesive Type

2K PU

Aluminium Alloy Bottom Sheet

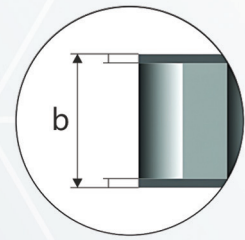
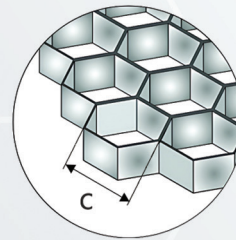
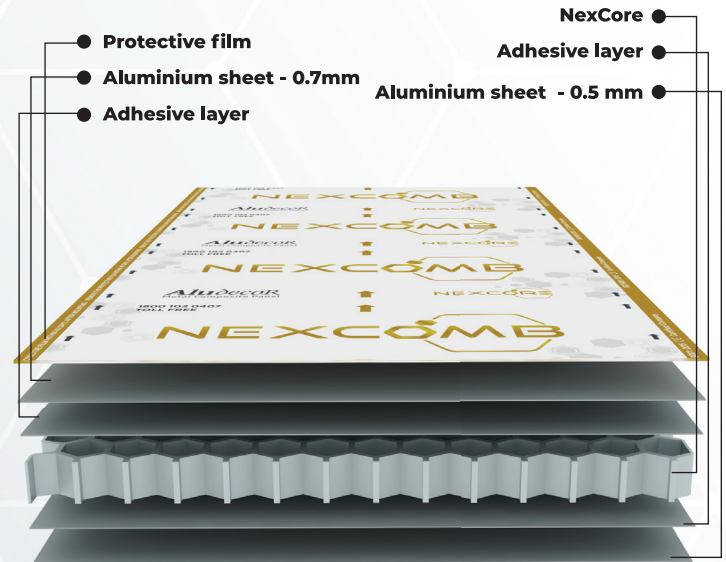
- Sheet Thickness In mm
- Alloy Grade
- Temper

0.50
AA 3105
H - 14/16

Service Coat

- Service Coat Type
- Coating Thickness (Microns)

Polyester
4 -7



Cell height is 10.8mm

Cell size is 19mm

Cell size (c), Cell height (b)

Special Note

The above-mentioned specifications are our standardized production for Nexcomb 12mm. It can be customized as per requirement. It is also available in:

Aluminium Sheet Alloy Grade	AA 5005 H24
Aluminium Top Sheet	0.5mm
Aluminium Bottom Sheet	0.7mm
Coating Types	FEVE Lumiflon, SDP
NexCore Sizes Available	6mm, 10mm, 14mm



NexComb 10mm

Description

Specifications

NexComb

- Panel Thickness In mm
- Panel Weight (Kg/Sqm)

10
4.4

Top Coat

- Coating Type
- Coating Thickness (Microns)

PVDF
>25

Aluminium Alloy Top Sheet

- Sheet Thickness In mm
- Alloy Grade
- Temper

0.7
AA 3105
H - 14/16

Adhesive

- Adhesive Type

2K PU

NexCore

- NexCore Cell Size
- NexCore Thickness
- NexCore Density (Kg/m³)
- NexCore Alloy Grade

19mm
8.8
28
3003

Adhesive

- Adhesive Type

2K PU

Aluminium Alloy Bottom Sheet

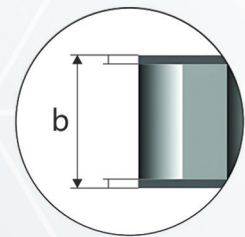
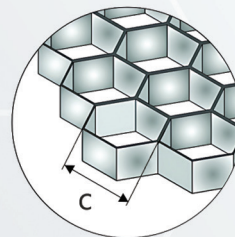
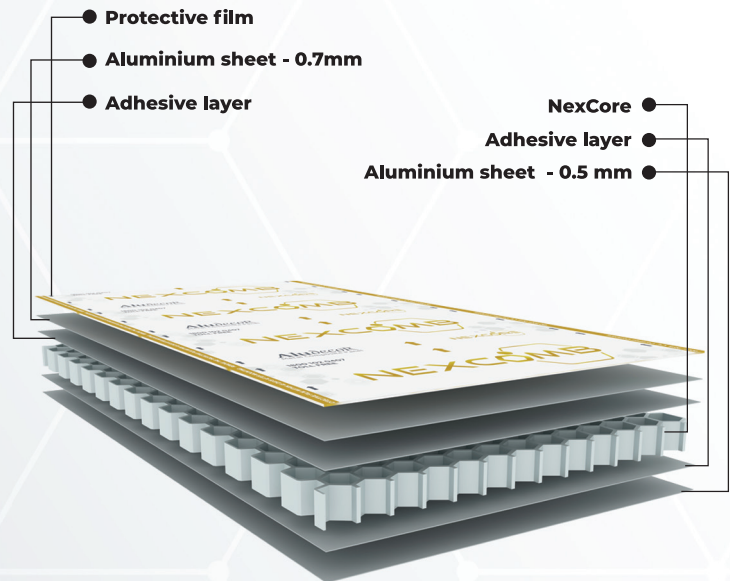
- Sheet Thickness In mm
- Alloy Grade
- Temper

0.50
AA 3105
H - 14/16

Service Coat

- Service Coat Type
- Coating Thickness (Microns)

Polyester
4 -7



Cell height is 10.8mm

Cell size is 19mm

Cell size (c), Cell height (b)

Special Note

The above-mentioned specifications are our standardized production for Nexcomb 10mm. It can be customized as per requirement. It is also available in:

Aluminium Sheet Alloy Grade	AA 5005 H24
Aluminium Top Sheet	0.5mm
Aluminium Bottom Sheet	0.7mm
Coating Types	FEVE Lumiflon, SDP
NexCore Sizes Available	6mm, 10mm, 14mm



Aluminium Top And Bottom Skin Properties

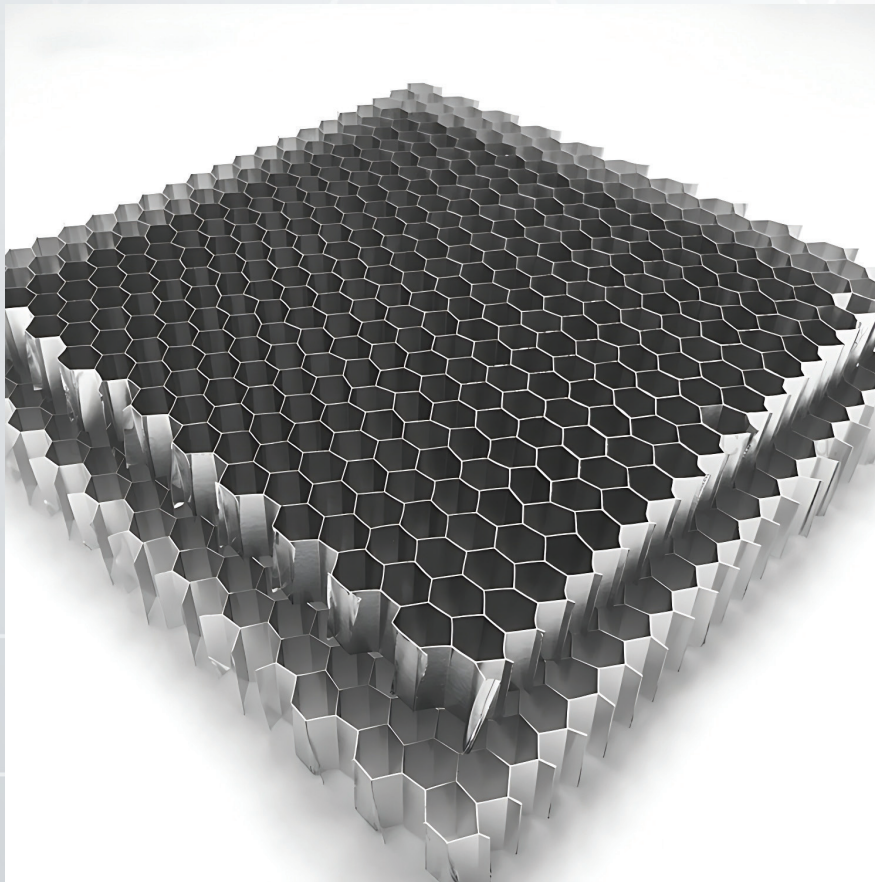
S.No.	Description		
1	Aluminium Alloy Grade	AA3105 H14	AA5005 H24
2	Tensile Strength (N/mm2)	150-200	145-185
3	Yield Strength (N/mm2)	Min. 130	Min. 110
4	Minimum Elongation (%)	≥2	≥3

Aluminium Top Coat

S.No.	Description	
1	Top Coat Type	PVDF
2	Binder	Kynar 500 (70:30)
3	Top Coat DFT (Dry Film Thickness)	>25
4	Weatherometer Test	AAMA 2605
	Gloss retention	50%
	Colour Retention	Max. 5 Units
	Chalk Resistance	Max. 8 Units
5	Salt Spray Test	Pass 4000 Hours
6	Abrasion Resistance	40 L/ml
7	Formability	2T
8	Pencil Hardness	H
9	Reverse Impact: Cross hatch	No Pick up
10	Adhesion	
	Dry	No Pick up
	Wet	No Pick up
	Boiling Water	No Pick up

Why NexCore?

Embark on a journey into the world of engineering innovation with NexCore, the indigenously developed Honeycomb Core by Aludecor. Engineered with precision in Aludecor's state-of-the-art manufacturing facility, NexCore revolutionizes the concept of strength and quality control for honeycomb panels. Here's why NexCore is the driving force behind the exceptional performance of NexComb Honeycomb Panels:



- **Unmatched Strength:** Crafted from high-quality AA3003 grade aluminium alloy, NexCore empowers NexComb with unrivalled strength. Its robust composition ensures outstanding load-bearing capabilities, making NexComb Honeycomb Panels a reliable choice for a wide range of applications.
- **Lightweight Brilliance:** Despite its remarkable strength, NexCore will make NexComb impressively lightweight. This attribute not only facilitates easier handling and installation but also enables architects and designers to push the boundaries of creativity.

- **Sustainable Solution:** Aludecor's commitment to sustainability shines through NexCore. Made with eco-friendly aluminium materials, it aligns with green building practices, contributing to a greener and more sustainable future. By choosing NexComb, you make a conscious choice for both durability and environmental responsibility.
- **Impeccable Quality Control:** NexCore ensures stringent quality control measures throughout the manufacturing process, guaranteeing consistency and reliability in every panel. Aludecor's commitment to excellence shines through the flawless performance and lasting durability of NexComb Honeycomb Panels.

Experience the cutting-edge technology and unparalleled strength of NexCore in conjunction with NexComb Honeycomb Panels. Step into a world where lightweight meets strength, where sustainability and quality converge to create architectural marvels. Unleash your creativity and elevate your projects with the unmatched power of NexCore and the awe-inspiring NexComb Honeycomb Panels, brought to you by Aludecor, the pioneers of innovation in architectural materials.

S.No.	Description	Specifications			
1	Cell Sizes	6mm	10mm	14mm	19mm
2	Alloy Grade	AA3003 H-18			
3	Foil Thickness	76 microns			
4	Core Density (kg/m ³)	102	62	47	34
5	Tensile Strength (N/mm ²)	Min. 190			
6	Yield Strength (N/mm ²)	Min. 170			
7	Elongation (%)	2			

Honeycomb Panel Product Code

S.No.	Honeycomb Panel Product Code	Cell Size (in mm)	Core Foil Thickness (In Micron)	Panel Thickness (In MM)
1	HCP006-076-10	6	76	10
2	HCP006-076-12	6	76	12
3	HCP006-076-25	6	76	25
4	HCP010-076-10	10	76	10
5	HCP010-076-12	10	76	12
6	HCP010-076-25	10	76	25
7	HCP014-076-10	14	76	10
8	HCP014-076-12	14	76	12
9	HCP014-076-25	14	76	25
10	HCP019-076-10	19	76	10
11	HCP019-076-12	19	76	12
12	HCP019-076-25	19	76	25

Special Note

- Top and bottom metal (Al / Zn) sheet to be selected as per customer's requirement
- Thickness of top and bottom sheet to be selected according to customer requirement
- Customizable panel thicknesses can be made available upon request - contact us
- Core foil thicknesses are also available in 40 and 50 microns



From the house of
Aludecor
Metal Composite Panel

**Head Office
Kolkata**

Martin Burn Building Suite 52 5th Floor 1 RN Mukherjee Road
Kolkata 700001 West Bengal
P +91 33 4027 6600

**Works
Haridwar**

(Unit 1) Plot 95 | 96 | 97 Sector V IIE Sidcul Ranipur BHEL
Haridwar Uttarakhand 249403
P +91 1334 239 343

(Unit 2) Plot 31A Sector 11 IIE Sidcul Ranipur BHEL
Haridwar Uttarakhand 249403

(Unit 3) Industrial Plot No 23 Industrial Park IV Begampur
Pargana Roorkee Haridwar Uttarakhand 249405

Toll Free 1800 102 0407
info@aludecor.com | aludecor.com
CIN: U27203WB2004PTC099221



Scan for Zonal & Branch address

W aludecor.com/branch-locator



Scan this to enquire

W aludecor.com/enquiry

A percentage of the proceeds from our sales is forwarded towards welfare purposes.

Follow us on



Best Practices Award from the European Society for Quality Research (ESQR), for Quality, R&D, Meticulous Test Metrics, First-rated Industry Practices and Best-in-class Products, received at Brussels, Belgium.