

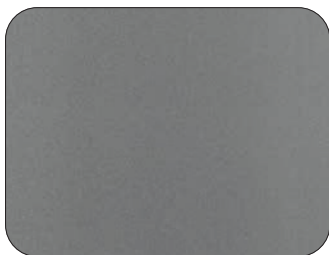


AludecoR
Metal Composite Panel

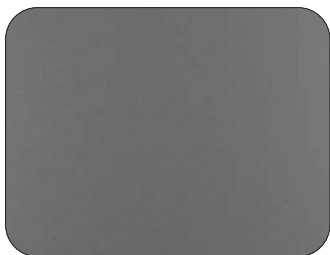
4mm ENDURA

THE PERFECT WEATHER SHIELD FOR FACADES

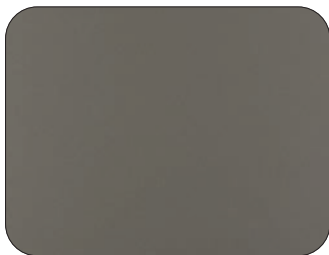
AL 4E ACP Range



AD-01 | Exotic Silver



AD-02 | Soothing Silver



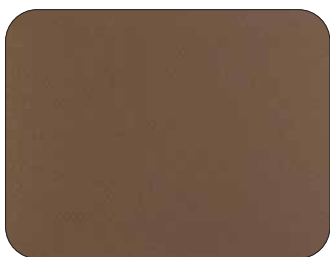
AD-03 | Champagne Silver



AD-05 | Champagne Gold



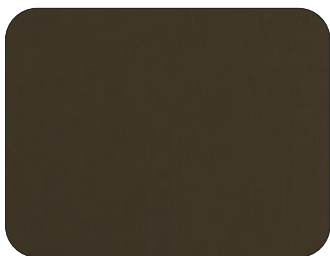
AD-09 | Bronze



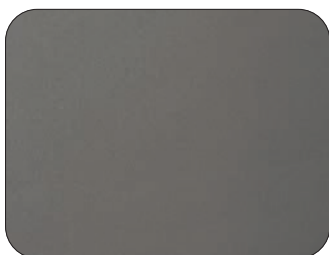
AD-06 | Copper



AD-07 | Gold



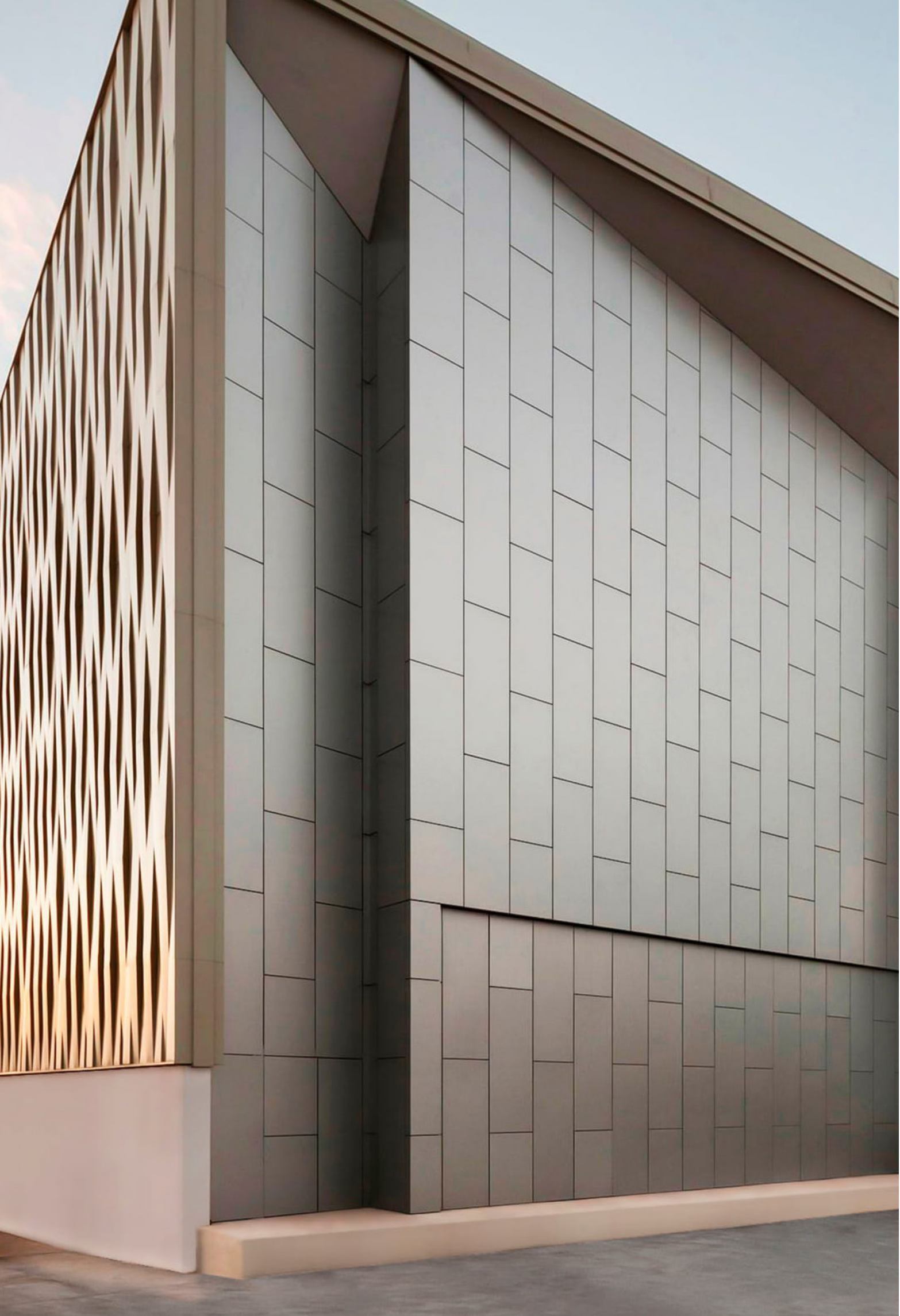
AD-508 | Alu Gold



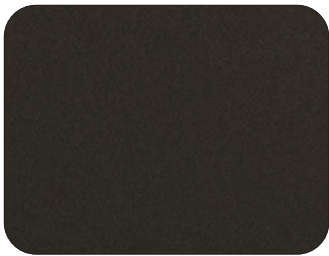
AD-301 | Gun Metallic



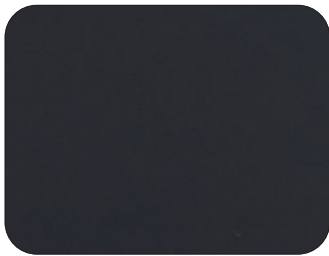
AD-302 | Grey Metallic



AL 4E ACP Range



AD-7001 | Dark Bronze



AD-7002 | Coal Grey



AD-32 | Metallic Black



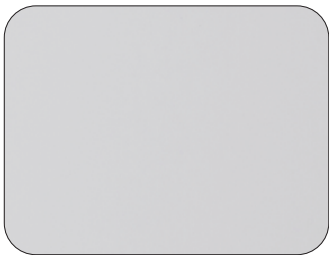
AD-31 | Black



AD-202 | Milky White



AD-21 | White



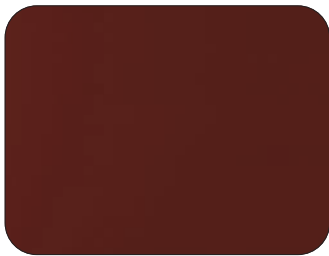
AD-206 | Brilliant White



AD-22 | Off White



AD-11 | Fashion Grey



AD-73 | Red

Maximum Panel Stress - $\sigma_{max} = (\beta \cdot W \cdot b^2) / t^2$

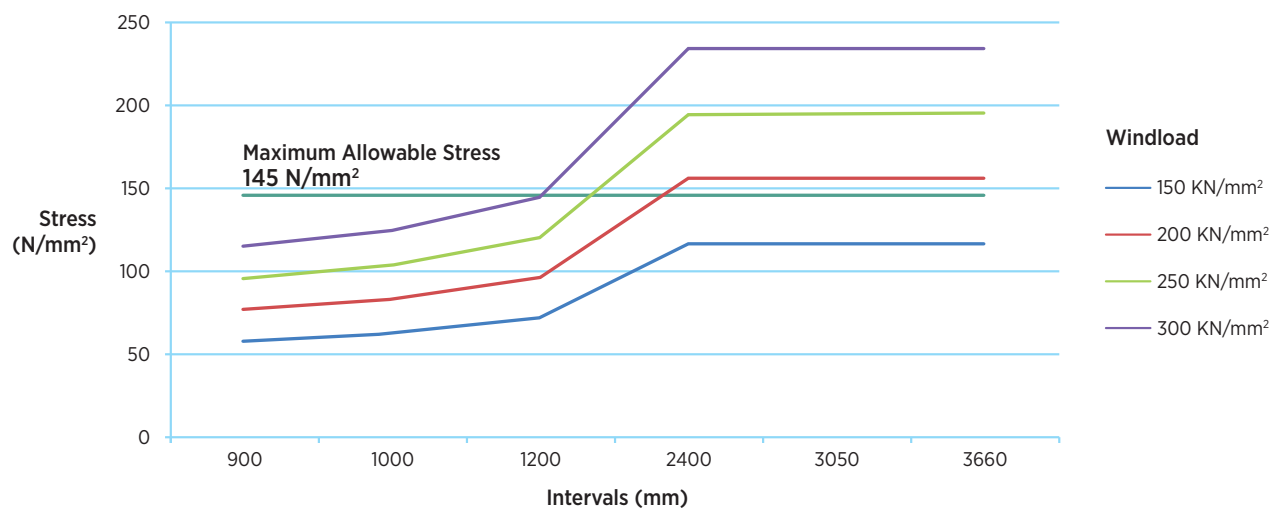
Maximum Panel Deflection - $y_{max} = (\alpha \cdot W \cdot b^4) / (E_{ACP} \cdot t_{ACP}^3)$

W = Wind Pressure (N/mm²) | a = Longer side of the panel (mm) | b = Shorter side of the panel (mm)
t² = (Panel Thickness³ - Core Thickness³) / Panel Thickness | E_{ACP} = Flexural Elastic Modulus (N/mm²)
t³ = Panel Thickness³

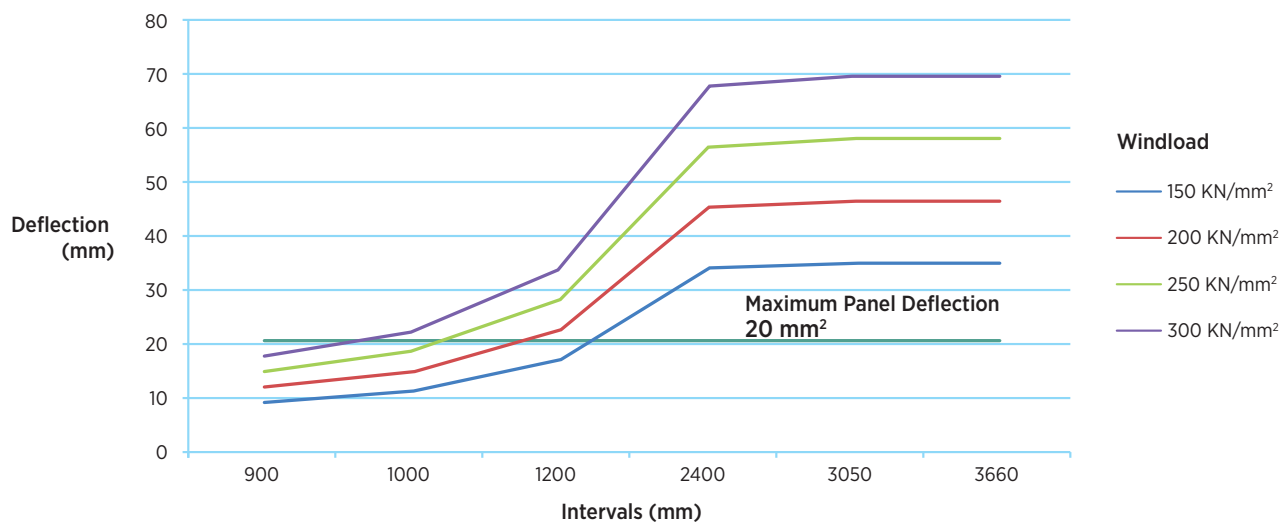
σ and β to be taken from the table below

a/b	1	1.2	1.4	1.6	1.8	2	above
σ	0.3078	0.3834	0.4356	0.468	0.4872	0.4974	0.5
β	0.0138	0.0188	0.0226	0.0251	0.0267	0.0277	0.0284

Allowable Stress Curve (AL 4E)*



Maximum Deflection Curve (AL 4E)*



*AL 4E Product chosen with 1200 mm width

Heritage of Performance

Heritage in Aludecor has been a rule of engagement with our valued customers, an act of communication, as well as, delivering contemporary and world-class designs and decor.

Product specifications

Panel Dimensions					
Standard Sizes	2440 x 1220 mm		3050 x 1220 mm		3660 x 1220 mm
Grades					
AL 4E	Panel Thickness 4 mm		Top Skin 0.50 mm		Bottom Skin 0.50 mm
Coating Thickness					
Front Coil/Top Skin			Back Coil/Bottom Skin		
Double Coat UV Resistant Super Durable Paint 24 μ - 28 μ Suppliers AkzoNobel/ PPG/ Beckers/ Nippon			4 μ - 7 μ Service Coat		
Thickness of LDPE/Mineral Core			Grade of Aluminium Skin		
3 mm			AA3105 (Supplier-Hindalco)		
Product Tolerance					
Width	Length	Thickness		Squareness	Bow
		Coil	Panel		
±2.0 mm	±4.0 mm	±0.03 mm	±0.2 mm	Maximum 5.0 mm	Maximum 0.5% of width and/or length
Application					
Exterior					

Images used here are indicative and for your reference only. For more details, contact your local area sales representative. All shades in this catalogue are available in sheet sizes of: 2440 mm x 1220 mm, 3050 mm x 1220 mm & 3660 mm x 1220 mm. Customised length also available on Minimum Order Quantity (MOQ).

Shades may vary from batch to batch. For warranty and related matters please contact our toll free number 1800 102 0407.

At Aludecor our aim is to facilitate imagination, creativity and innovation. We ensure this through future-friendly products that raise the bar, every day.

Stringent measures are adopted to make sure that the products meet international standards. Since 2002, the company has consistently upgraded technology, introduced superior aesthetics, used the best raw materials and established new parameters for excellence in the national market of Metal Composite Panels (MCPs) and coated coils.

Reasons to buy Aludecor MCPs



Flexible



Durable



Fire-retardant



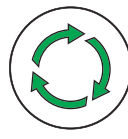
Use of
Lead-free paints



Helps buildings
qualify for LEED



Exterior Coating



Recyclable



Saves energy



Best Practices Award from the European Society for Quality Research (ESQR), for Quality, R&D, Meticulous Test Metrics, First-rated Industry Practices and Best-in-class Products, received at Brussels, Belgium.



Aludecor MCPs can come in both Aludecor FireWall A2 and Aludecor FireWall. They have Factory Production Control certification from Emirates Safety Laboratory (ESL) for reaction to fire classifications of EN 13501-1 Class A2 - s1, d0 for FireWall A2 and EN 13501-1 Class B-s1, d0, DIN 4102 Class B1 for Aludecor FireWall.

#BeatTheFire

*Aludecor FireWall A2 has fireproof properties close to metals.



*In all shades for exterior application



AludecoR

Metal Composite Panel

Head Office

Kolkata

Martin Burn Building Suite 52 5th Floor
1 RN Mukherjee Road Kolkata 700001
P +91 33 4027 6600

Works

Haridwar

(Unit 1) Plot 95 | 96 | 97 Sector V IIE Sidcul Ranipur BHEL
Haridwar Uttarakhand 249403
P +91 1334 239 343

(Unit 2) Plot 31A Sector 11 IIE Sidcul Ranipur BHEL
Haridwar Uttarakhand 249403

(Unit 3) Industrial Plot No 23 Industrial Park IV Begampur
Pargana Roorkee Haridwar Uttarakhand 249405

Toll Free 1800 102 0407
info@aludecor.com | aludecor.com
CIN: U27203WB2004PTC099221

Zonal Offices - Chennai | Mumbai | New Delhi

Branch Offices - Ahmedabad | Bangalore | Guwahati | Hyderabad
Indore | Jaipur | Kochi | Lucknow | Pune



Scan for Zonal & Branch address
W aludecor.com/branch-locator



Scan this to enquire
W aludecor.com/enquiry

A percentage of the proceeds from our sales is forwarded towards welfare purposes.

Follow us on



AludecoR

**DESIGN
ASSIST**

Customised digital support

Get 3D previews
of the interiors and exteriors
you wish to fabricate and more . . .

- 1 Visit aludecor.com
- 2 Go to the Support Section
- 3 Click on the Design Assist Section
- 4 Follow step-by-step instructions
for fabrication ideas
. . . absolutely FREE!