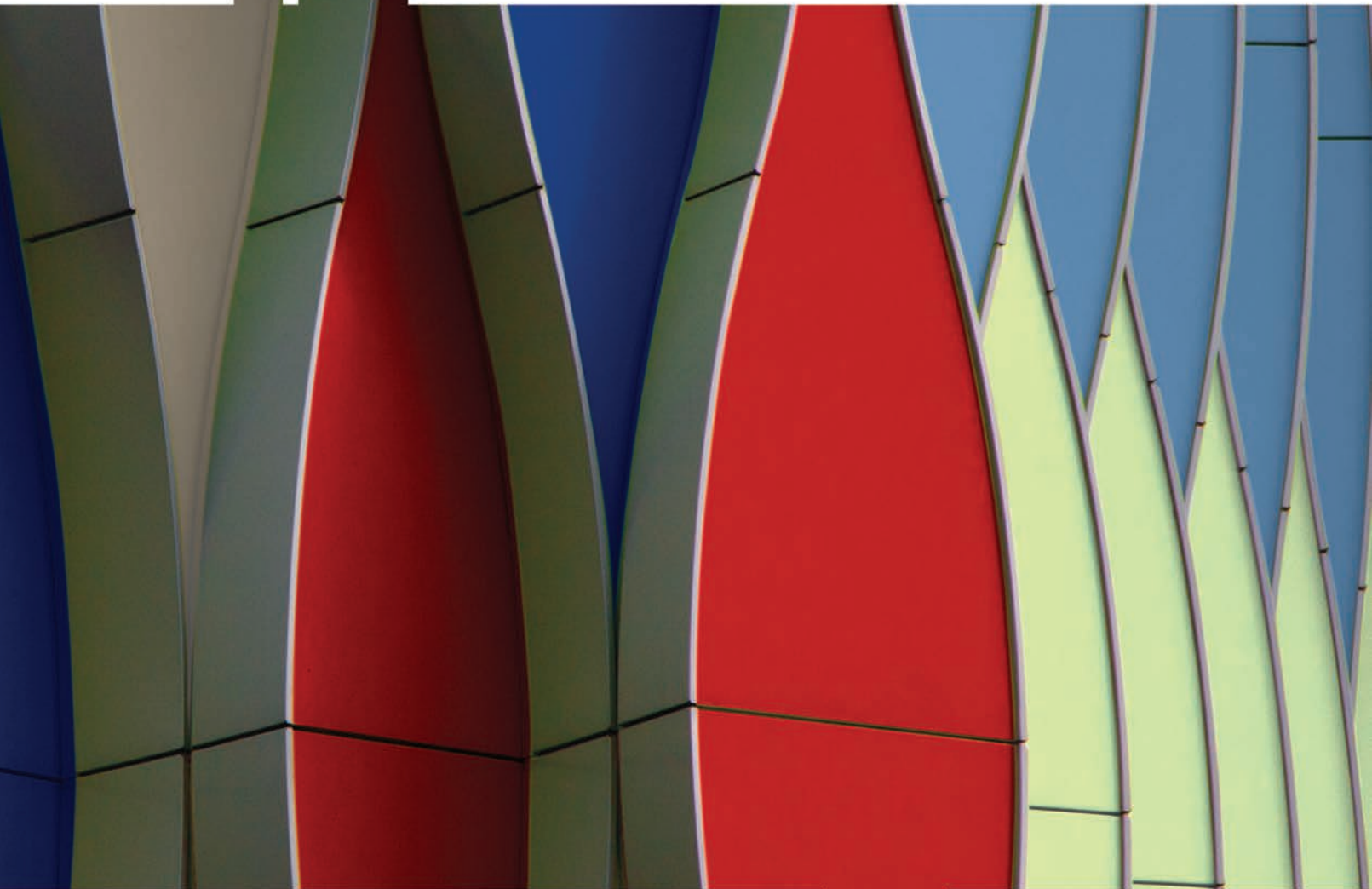




Imagine. Create. Innovate.



*AludecoR*  
Metal Composite Panel

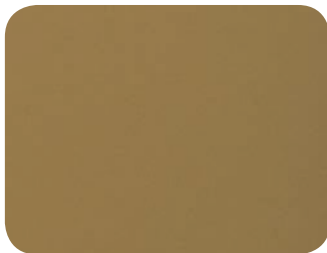
*AludecoR*  
**GLOZ**  
SERIES  
Vibrant and dynamic MCPs



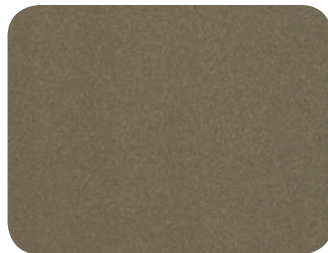
SH-030 | Glossy  
Champagne Silver



SH-010 | Glossy  
Exotic Silver



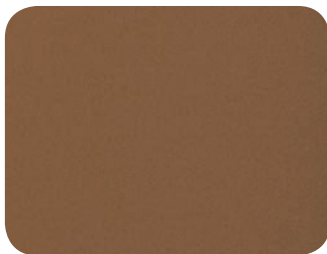
SH-070 | Glossy Gold



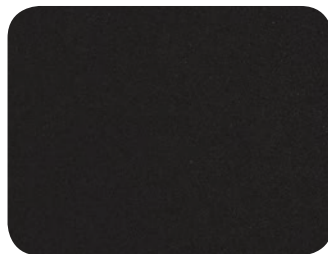
SH-050 | Glossy  
Champagne Gold



SH-090 | Glossy Bronze



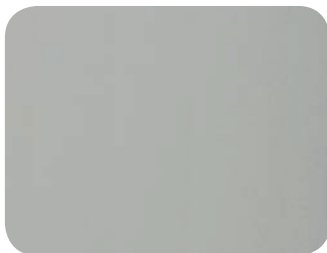
SH-060 | Glossy Copper



SH-320 | Glossy  
Metallic Black



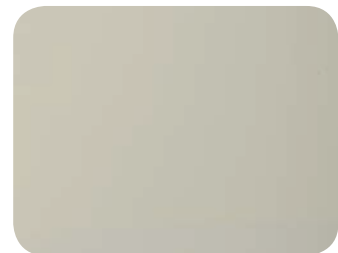
SH-110 | Glossy  
Fashion Grey



SH-203 | Glossy  
Pearl White



SH-201 | Glossy  
Pure White



SH-220 | Glossy Off White



SH-310 | Glossy Black



SH-480 | Glossy  
Oxford Blue

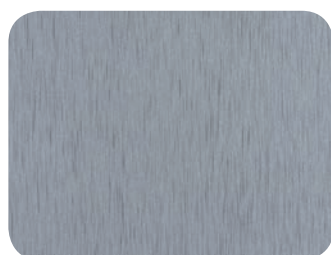


SH-730 | Glossy Red

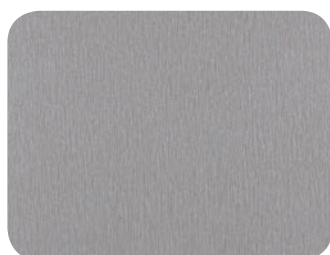
*AludecoR*  
**BRUSHED**  
SERIES  
ACPs with master strokes



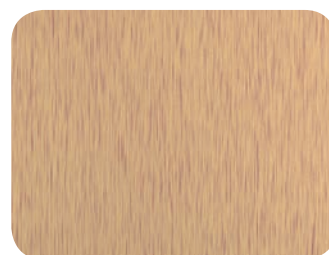
SP-01(E) | Butler Silver



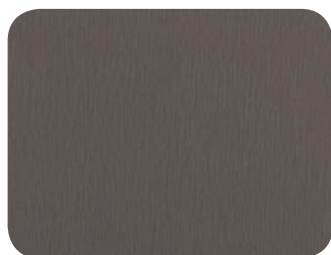
PE-14 | Oxidised Brushed



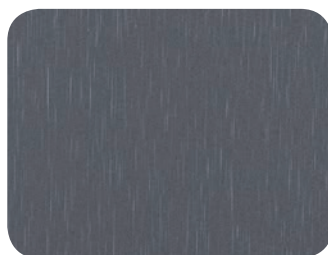
PE-18 | Exotic Brushed



PE-16 | Copper Brushed



PE-15 | Bronze Brushed

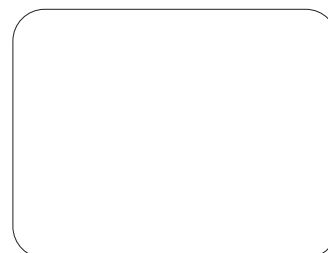


PE-19 | Graphite Brushed



PE-05(N) | Titanium Brushed

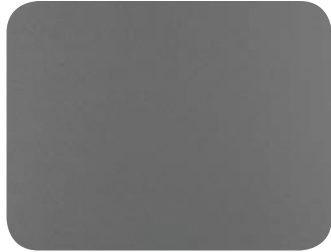
*AludecoR*  
**MIRROR**  
SERIES  
Super-reflective ACPs



SP-401 | Exterior Mirror



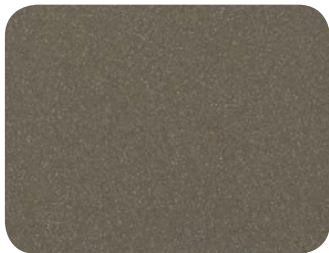
AD-01 | Exotic Silver



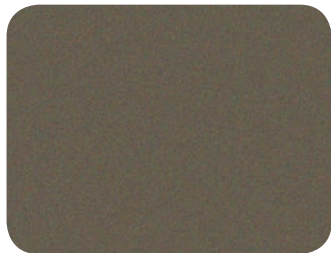
AD-02 | Soothing Silver



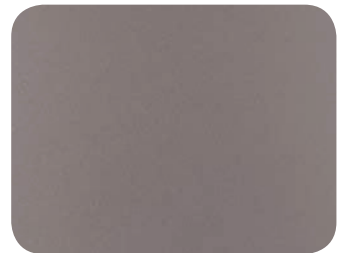
AD-03 | Champagne Silver



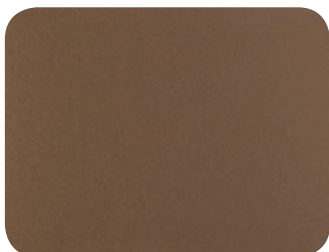
AD-05 | Champagne Gold



AD-09 | Bronze



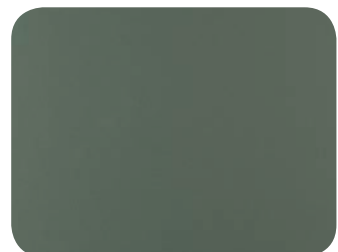
AD-84 | Rose Metallic



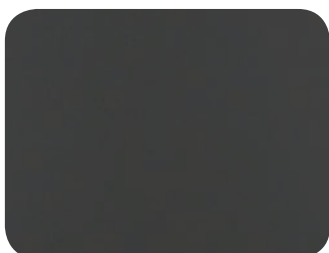
AD-06 | Copper



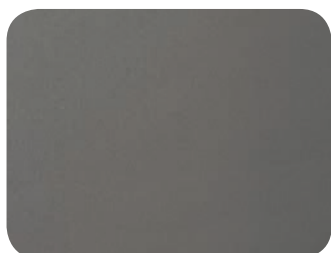
AD-07 | Gold



AD-04 | Jade Green



AD-32 | Metallic Black



AD-301 | Gun Metallic



AD-302 | Grey Metallic





AD-81 | Wine Red



AD-82 | Pearl Copper



AD-83 | Coffee Brown



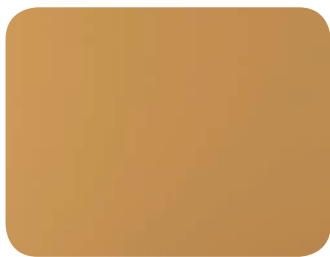
AD-14 | Burgundy



AD-74 | Post Office Red



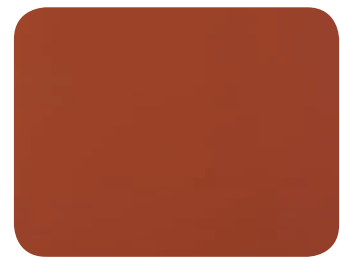
AD-73 | Red



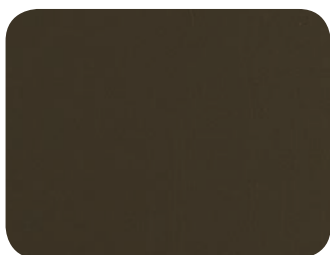
AD-61 | Traffic Yellow



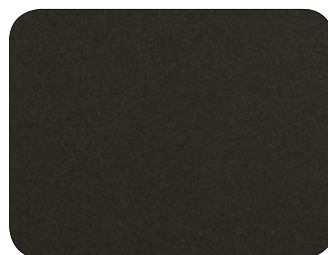
AD-12 | Yellow



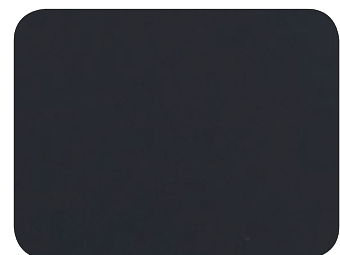
AD-92 | Bright Orange



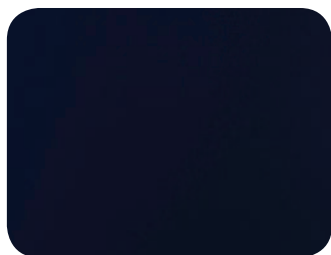
AD-508 | Alu Gold



AD-7001 | Dark Bronze



AD-7002 | Coal Grey



AD-41 | Dark Blue



AD-42 | Light Blue



AD-43 | Signal Blue



AD-11 | Fashion Grey



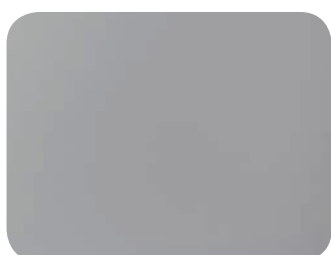
AD-52 | Bright Green



AD-31 | Black



AD-21 | White



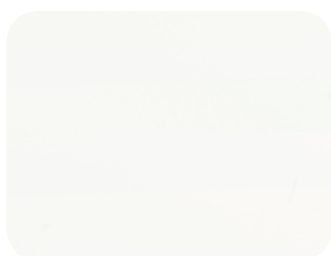
AD-201 | Pure White



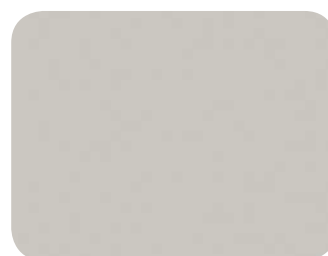
AD-206 | Brilliant White



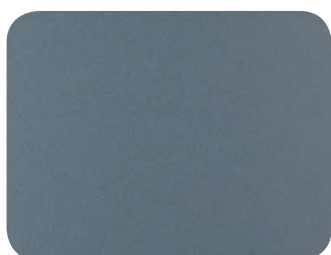
AD-22 | Off White



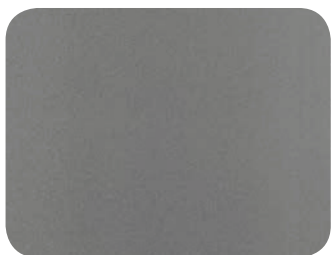
AD-202 | Milky White



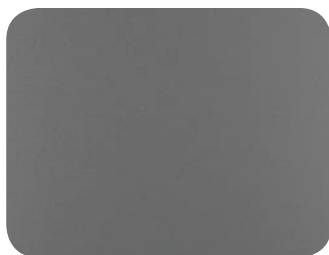
AD-207 | New White



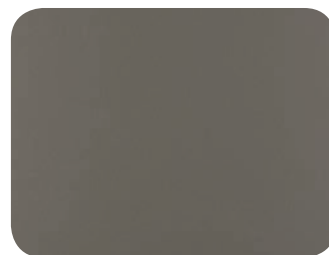
AD-08 | Metallic Blue



AD-01 | Exotic Silver



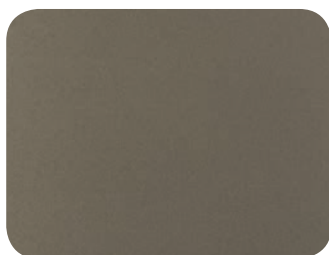
AD-02 | Soothing Silver



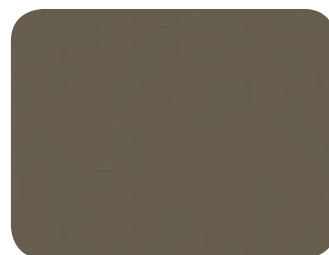
\*AD-03 | Champagne Silver



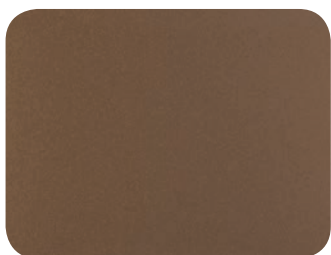
\*AD-04 | Jade Green



AD-05 | Champagne Gold



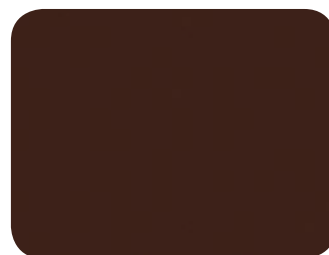
\*AD-09 | Bronze



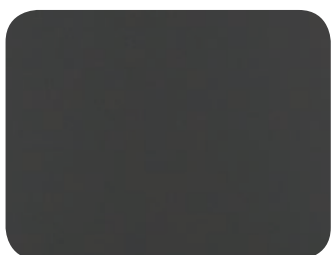
AD-06 | Copper



\*AD-07 | Gold



\*AD-82 | Pearl Copper



AD-32 | Metallic Black



AD-12 | Yellow



\*AD-61 | Traffic Yellow



AD-21 | White



AD-22 | Off White



AD-31 | Black



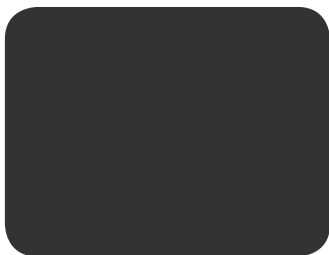
AD-43 | Signal Blue



AD-41 | Dark Blue



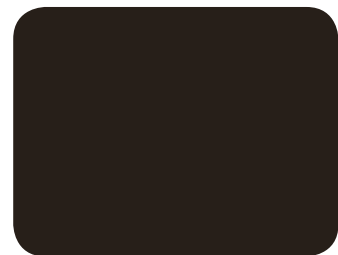
\*AD-08 | Metallic Blue



\*AD-11 | Fashion Grey



AD-52 | Bright Green



\*AD-83 | Coffee Brown



AD-14 | Burgundy

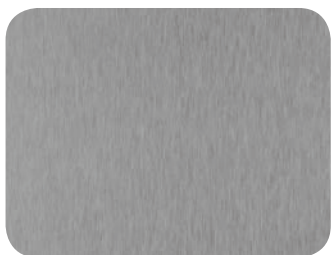


AD-72 | Bright Red

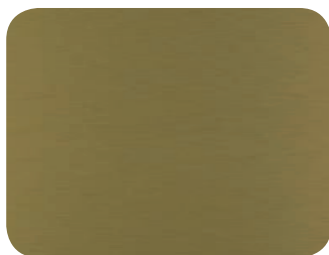


AD-94 | New Bright Orange

## Special Category



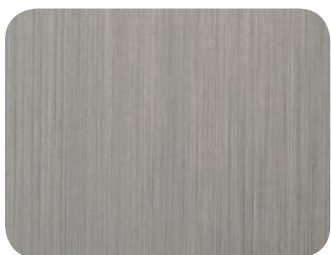
\*SP-01 | Butler Silver



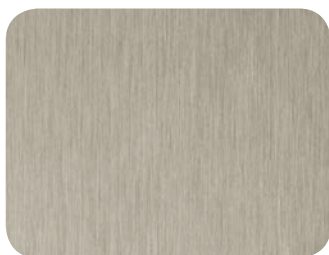
\*SP-02 | Butler Gold



\*SP-04 | Mirror



\*SP-05 | Butler Steel



\*SP-05(I) | Butler Steel

SH-201 | Glossy  
Pure White

\*SH-310 | Glossy Black



\*SH-730 | Glossy Red



\*SP-105 | Gold Mirror

\*Shade numbers AD-03, AD-04, AD-07, AD-08, AD-09, AD-11, AD-61, AD-82, AD-83, SP-01, SP-02, SP-04, SP-05, SP-05(I), SP-105, SH-310, and SH-730 are not available in AL 312 grade. Kindly contact the dealer or local sales representative for more details. Images used here are indicative and for your reference only. For more details, contact the dealer or local area sales representative. All shades in this catalogue are available in sheet sizes of: 2440 mm x 1220 mm, 3050 mm x 1220 mm & 3660 mm x 1220 mm.

Shades may vary from batch to batch. For warranty and related matters please contact our toll free number 1800 102 0407.

## Product specifications

Sl. No.	Particulars	Product Composition		
1	Product Grade	AL 43	AL 33	AL 32
2	Total Thickness of The Panel	4 mm	3 mm	3 mm
3	Thickness of The Aluminium Skin (Top/Bottom)	0.25 mm	0.25 mm	0.2 mm
4	Thickness of Mineral Core/LDPE Core	3.5 mm	2.5 mm	2.6 mm
5	Grade of Aluminium Alloy	AA 1100 Supplier Hindalco		
6	Coating Thickness (Top Coil)	25 - 28 microns   Two Coat Suppliers Akzonobel/PPG/Beckers/Nippon		15 - 18 microns Single Coat
7	Coating Thickness (Back Coil)	4 - 7 microns   Service Coat		
8	Product Tolerance	<b>AL 43, AL 33, AL 32</b> Panel Width $\pm$ 2.0 mm Panel Length $\pm$ 4.0 mm; Panel Thickness $\pm$ 0.2 mm Maximum Squareness 5.0 mm Maximum Bow 0.8% of width and/or length Coil Thickness 0.03 mm		

Also available in Special Series



Note : The color in the e-catalogue is indicative and might differ from actual product shade. For order finalization, please refer to the physical shade card/catalogue with actual product swatch for color reference.



AludecoR

# DA DESIGN ASSIST

Customised digital support

WE CREATE THE FAÇADE OF YOUR SPACE OR BUILDING YOU NEED IN 3D



## ALUMINIUM COMPOSITE, ZINC AND COPPER, THE FACADES OF THE PRESENT.

Aludecor, is a company specialised in offering Architectural Solutions adapted to all fields of Architecture since 2004.

At Aludecor, we manufacture aluminium, zinc and copper composite panels that offer a wide variety of finishes and textures for the architectural sector as well as for construction, decoration and interior design.

Since 2004, many professionals such as architects, interior designers and builders from all over the world have chosen our products thanks to the quality, guarantee and innovation that Aludecor composite boasts.

Aludecor has entered the world of avant-garde architecture, design and construction to transform the buildings of tomorrow.

Trendsetters in composite panels and coated coils, which embellish the interiors and exteriors of buildings, helping to create contemporary, cutting-edge structures that easily catch the eye.

Through constant technological innovation and research, Aludecor has set new standards of excellence, leading to new concepts and more than 350 high quality finishes and textures, on which we can offer up to 20 years of warranty.

### Why choose Aludecor Spain

20 YEARS OF GUARANTEE

AludecoR Systems

+350 FINISHES AND TEXTURES

QUICK ASSEMBLY

LEAD-FREE PAINTS

EXTERIOR AND INTERIOR CLADDING

LIGHT WEIGHT

PRODUCTS IN OBJECTS BIM

100% RECYCLABLE

HIGH STRENGTH AND DURABILITY

IGNIFICENT

CERTIFICATION LEED

AludecoR Fire wall Fire Retardant MCPs

AludecoR Fire wall A2 Fireproof MCPs

# AludecoR

ALUMINIUM, ZINC, COPPER COMPOSITE PANELS

ALG Grupo Industrias Aproxyma S.L.  
TIF: +34 868 240 006  
Email: contacto@aludecor.es

Ctra Murcia-San Javier, RM19-Km0  
P.I Cartago 30155 - Baños y Mendigo,  
Murcia - SPAIN

[www.aludecor.es](http://www.aludecor.es)